

# 56 Coleraine Crescent, Corio, Vic 3214



## Sold House

Wednesday, 7 February 2024

56 Coleraine Crescent, Corio, Vic 3214

Bedrooms: 3

Bathrooms: 1

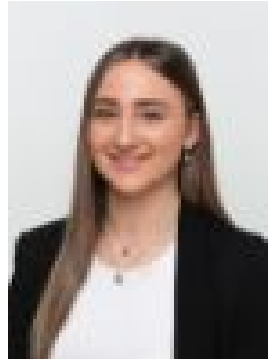
Parkings: 5

Area: 719 m2

Type: House



Chari Emirzade  
0352280622



Chanelle Morrison  
0429221913

**\$440,000**

Situated on a 719m<sup>2</sup> (approx.) allotment, this family home is set in an unbeatable location. Perfect for anyone looking for a comfortable and convenient lifestyle, within close proximity to all major amenities. The home welcomes you into an open plan living room flooding with natural light, effortlessly adjoining with the kitchen and dining space equipped with an air conditioning unit. The hallway leads you to three generous bedrooms, each fitted with a built-in-wardrobe, serviced by a central bathroom, separate toilet and laundry. The backyard is the ultimate family zone, with an undercover entertainment area perfect for family gatherings year round. Located in the highly sought after Cloverdale Estate, this home is conveniently located near the Corio Village Shopping Centre for all your essentials, schools for all ages and public transport. The Princes Highway and the Geelong Ring Road are easily accessed making commuting across Melbourne and Geelong a breeze.