

56 Elvire Street, Midland, WA 6056



Acreage For Sale

Tuesday, 7 May 2024

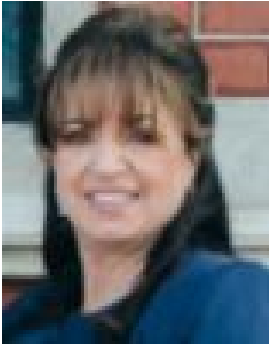
56 Elvire Street, Midland, WA 6056

Bedrooms: 4

Bathrooms: 2

Area: 1038 m2

Type: Acreage



Connie Cooksley

0892506070

\$430,000 Plus

This large 1038sqm block can be subdivided to capitalize on the zoning potential or build your dream home with space around you. PROPERTY FEATURES:-?Large 1,038sqm Block-?R20 Zoning with Two Street Frontage -?Cleared and Level Block-?Services Available -?Options to Subdivide and Develop or Build Your Dream Home-?Excellent Location, Close to Schools, Transport and Parklands.For more information or to arrange a viewing please contact Connie - 0419 047 745.