

**56 Henry Street, Fremantle, WA 6160**

**House For Sale**

Tuesday, 7 May 2024



56 Henry Street, Fremantle, WA 6160

**Bedrooms: 3**

**Bathrooms: 3**

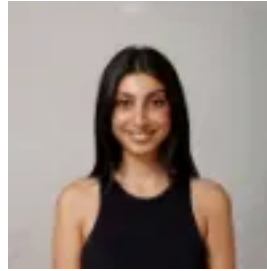
**Parkings: 2**

**Area: 256 m2**

**Type: House**



James Peach  
0433464339



Ish Sikka  
0401972434

## Offers from \$1,600,000

Part of the Old Bank Row, "Bateman House" is situated in the highly sought after West End Heritage area. This charming & light filled 3 bedroom, 2 bathroom home is Fremantle Living at it's best! Built in the 1990s, the property offers remarkable character and timeless appeal with the perfect blend of quality, security and a vibrant inner-city lifestyle along with a very rare double lock up garage and a green outlook from almost every room. The modern-Georgian architecture of the house is truly unique. The expansive French windows accent the primary living area & the second floor takes you into the mezzanine formal dining space perfect for entertaining guests. The modern kitchen includes 900mm stainless steel ASKO appliances, gas cooking, stone benchtops and breakfast bar. The main bedroom is spaciously designed with built-in robes, an en-suite and access to the terrace overlooking landscape and ocean views. There are two additional spacious bedrooms with built in robes. The large bathroom is central to the bedrooms and there is an additional powder room on the bottom floor. The property also features an alfresco balcony and high-quality louvers. The double garage is accessed via a security gate and includes a lockable store room. Other storage includes including triple linen closets, understair storage and plenty of built in robes and cupboards. This trendy home is in a prime location opposite Esplanade Park and near Notre Dame University, with cafes and restaurants on your doorstep, markets and entertainment just a short walk away. The West End is just outside the door and stunning beaches are only minutes away. Stroll to Fishing Boat Harbour, Bathers Beach, Little Creatures or the Cappuccino Strip, and come home to the calm beauty of this chic space.

Size: Residence: 182m<sup>2</sup> Porch: 8m<sup>2</sup> Garage: 41m<sup>2</sup> Balcony: 6m<sup>2</sup> Terrace: 19m<sup>2</sup> Total: 256m<sup>2</sup> Levies: Admin: \$1,160.00 per quarter Reserve: \$522.00 per quarter