

**56 Waterside Drive, Wamuran, Qld 4512**



**House For Sale**

Thursday, 16 May 2024

56 Waterside Drive, Wamuran, Qld 4512

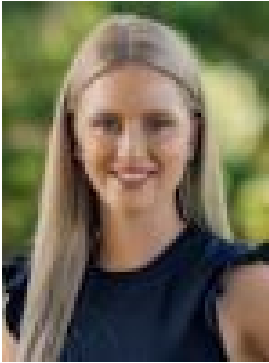
**Bedrooms: 3**

**Bathrooms: 3**

**Parkings: 6**

**Area: 2 m2**

**Type: House**



Sophie Laws

0499772721

## Expressions of Interest

'Bonnie Brae' is situated on 5 peaceful acres featuring a characteristic filled brick residence that is in immaculate condition and offers enough space for the entire family. Located on a no through road in one of Wamuran's premier neighbourhoods, this property is incredibly peaceful and private and enjoys stunning outlooks across the paddocks to adjoining acreage properties. Some of the many features of this amazing property include:- Generously proportioned living spaces including a formal lounge room, dining room and an air-conditioned open plan living area- Quality kitchen with electric cooktop, wall oven plus grill, dishwasher and plenty of bench and cupboard space - Master suite with walk in robe, ensuite and air conditioning- Two additional large bedrooms both with ceiling fans and built in wardrobes - Two-way main bathroom with a vanity, separate shower and bath- Separate toilet- Converted garage that is now an oversized utility room which also features a shower, toilet and laundry- Pebblecrete salt water inground pool- 16m x 9m powered shed (approximate)- Fully fenced property with a separately fenced back yard, front yard and paddock which also includes a dam for the livestock- Great block for a horse or two, the dogs to run and the kids to play- Solar power (3kW inverter)- Solar hot water system for the house plus an electric hot water for the kitchen sink- Security screened- Town water plus water tanks Location:- Approximately 2 minutes to Primary School, Childcare & Doctors- Approximately 3 minutes to local convenience store & service station- Approximately 15 minutes to the Bruce Highway- Approximately 55 minutes to Brisbane CBD For further information please call Sophie Laws from Ray White Wamuran today.