

56 Whistler Concourse, Bandiana, Vic 3691

House For Sale

Thursday, 14 March 2024



56 Whistler Concourse, Bandiana, Vic 3691

Bedrooms: 4

Bathrooms: 2

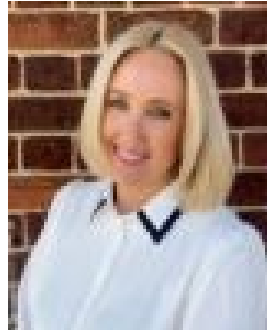
Parkings: 2

Area: 601 m2

Type: House



Jamie Maynard
0260245450



Donna Nusser
0419632327

\$679,000

Tucked away in the peaceful Alpine View Estate, this custom designed home offers style, sophistication and comfort. Quality built by Afonso Homes, the property sets the stage for a home that is as thoughtfully appointed as it is beautifully finished. The home warmly embraces with a grand entry, leading to a quartet of generously sized bedrooms. The master suite is a testament to luxury boasting an oversized suite providing room for a tranquil parents' retreat, further enhanced with an oversized walk-in robe and ensuite, where double vanities, stone benchtops and a privacy assured toilet creating a spa like atmosphere. Not just a space for rest, the master bedroom extends into a secluded alfresco, perfect for moments of solitude. Each of the three additional bedrooms feature mirrored built-in robes while the family bathroom offering luxury with stone topped vanity, deep bath and separate shower, with the toilet conveniently located separately. The heart of this home, the modern kitchen is a further masterpiece of design where quality Miele appliances, an induction cooktop, and an expansive island bench with a Caesarstone waterfall edge await the touch of the home chef. Overlooking the dining and family room, this space invites gatherings, with a rumpus room/theatre room nearby providing a sanctuary for entertainment, relaxation or games room. Beyond functionality, this home offers LED lighting casting a glow on the high ceilings and stunning timber flooring. Soundproofing in the rumpus/theatre room and kitchen wall ensures that peace reigns in the master bedroom and climate control is effortlessly managed with ducted evaporative cooling and gas heating, ensuring comfort in every season. Step outside, and the al fresco area beckons, complete with built-in speakers, overlooking a low maintenance rear yard with a rural outlook to the rear. Further outdoor inclusions offered include side access for a boat or trailer, extra driveway for a caravan, outdoor awnings that help with temperature control and an oversized double garage in both height and depth allowing the storage of a pop top caravan. Located on a 601m² allotment, around the corner from a fun filled children's playground, this is a home that will have your family living in style and comfort for many years to come with Wodonga a short drive away.

<https://www.consumer.vic.gov.au/duediligencechecklist>