

560 Flinders Parade, Brighton, Qld 4017

Professionals

Sold House

Friday, 19 January 2024

560 Flinders Parade, Brighton, Qld 4017

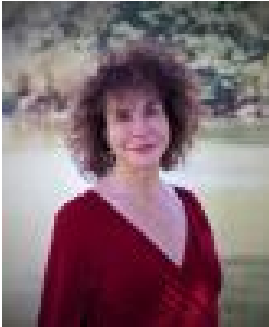
Bedrooms: 4

Bathrooms: 3

Parkings: 6

Area: 1 m2

Type: House



Helen Poulos
0438692237

Contact agent

"ELANDRA" Cc. 1990A HOME FOR "ALL SEASONS" Situated on Flinders parade waterfront with magnificent views over Moreton Bay and nestled on just under 2,000sqm of sprawling grounds ELANDRA promises and enviable lifestyle within one of Brisbane's most prestigious bayside suburbs. The home bathed in natural light will exceed your expectations with an intelligent use of space, excellent zoning and harmony. This property is a must inspect for the following buyers. • The growing family; • A couple with distinct taste looking for that very special home; • The savvy investor, who see the potential of almost 2000sqm of waterfront land on MILLIONAIRES ROW with a 20m frontage ALREADY ON TWO LOTS OF SUBDIVISION READY TO BUILD TWO SEPARATE HOMES ON IT AND ENJOY THE REWARDS, is sure to snap it up!!!

LOWER LEVEL: • Open plan kitchen and dining with bay views. • Family lounge (6.5m x 4.0m) with huge brick open fireplace with sliding doors opening onto covered verandah on two sides with bay views. • Full family bathroom with porcelain walls and ceramic Italian tiles. • Spacious living room (9.3m x 3.7m) with sliding doors opening onto covered patio (10.4 x 1.8m) flowing onto a private, cooling, landscaped, in-ground pool and spa. • Separate laundry room. • Spacious separate brick garage (12.7m x 6.2m) to accommodate four cars PLUS a carport (7.6m x 5.9m) to accommodate another two cars.

UPPER LEVEL: • Four bedrooms, three with built-in-robos and separate access onto covered verandahs Master bedroom with bay views and ensuite with black granite floor and marble walls. • Very spacious, open plan lounge room (6.0m x 4.1m) with huge open brick fireplace flowing onto a separate brand-new kitchenette with access via sliding doors to a wraparound verandah on two sides with bay views. • Main bathroom with shower and separate spa bath made with shellstone. This quintessential bayside home is truly an entertainers delight whilst offering superior quality for relaxed Executive living.

NEARBY: • Approx. 5m to Brighton foreshore • Approx. 400m to Brighton IGA supermarket • Approx. 1.3km to St Kieran's Primary School • Approx. 1.7km to Brighton State School • Approx. 2.0km to Sandgate Aquatic Centre • Approx. 2.3km to Nashville State School • Approx. 2.8km to Sacred Heart Catholic School • Approx. 3.6km to Sandgate Train and Bus interchange • Approx. 3.8km to Full Moon Hotel • Approx. 4.9km to St Patrick's College • Approx. 20km to Brisbane CBD

THIS ONE-OF-A-KIND PRESTIGIOUS PROPERTY TRULY IS A STEP ABOVE THE REST!!! Inspections by Appointment. Contact Helen Poulos TODAY!