

56A Greenglade Drive, Paradise, SA 5075



Sold Residential Land

Friday, 11 August 2023

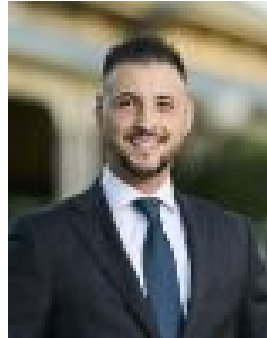
56A Greenglade Drive, Paradise, SA 5075

Area: 332 m2

Type: Residential Land



Stefan Siciliano
0403171489



Joseph Zollo
0449989467

\$490,000

56A Greenglade Drive is nestled among the best surrounds and amenities that Paradise has to offer. This 332m² allotment is the perfect opportunity to build the home of your dreams with a convenient frontage of 11.1 metres. Ideally located in a family friendly street and set amongst other quality homes, this allotment is ready for your family to build on. Prepare to build and indulge in your morning coffee among the gentle sounds of native birds before exploring the 30kms of idyllic river walks and nature across the road. Urban convenience with suburban tranquility set within walking distance to Paradise Interchange will make everyday experiences simple pleasures. The allotment shape and size makes the process of choosing a builders plan simple, with most major builders providing ready made blueprints which reduces costs involved in customising a design to fit. • Across from the Torrens • Ideal for families • Desirable Suburb • Close proximity to quality public and private schools • Close proximity to the O'Bahn

Disclaimer: As much as we aimed to have all details represented within this advertisement be true and correct, it is the buyer/purchaser's responsibility to complete the correct due diligence while viewing and purchasing the property throughout the active campaign. PLEASE NOTE: This property is being auctioned with no price in line with current real estate legislation. Should you be interested, we can provide you with a list of recent local sales to help you with your market and value research.