

**57 Aloha Drive, Chittaway Bay, NSW 2261**



**House For Sale**

Monday, 30 October 2023

57 Aloha Drive, Chittaway Bay, NSW 2261

**Bedrooms: 4**

**Bathrooms: 2**

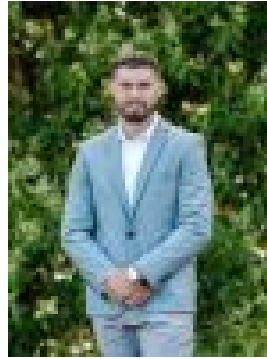
**Parkings: 2**

**Area: 632 m2**

**Type: House**



Ian Boyle



Blair Ryan

0416946406

## New to Market

Situated in one of Chittaway Bay's most sought-after positions capturing panoramic views of Tuggerah Lake from most areas of the home, this well-presented opportunity is not to be missed. The effortless flow from the kitchen out to the spacious outdoor covered entertaining area makes it the ideal home for those weekend gatherings. Sit down and relax while enjoying the peaceful lakeside lifestyle! The private and quiet location is ideal for families with off-street parking for multiple vehicles including your Boat or caravan. Features • Functional floorplan with spacious living and dining options • Large level 632 sqm square metre (approx.) block • Four bedrooms with built-ins • Open plan kitchen with lake views • Two living areas • Air conditioning • Entertaining deck looking out to the lake and reserve • Lockup storage room • Double car carport (ideal for caravan or boat) • Enormous driveway for plenty of off-street parking • Tranquil water views • Low maintenance landscaped gardens • Short drive to local beaches • Solid brick and tile construction • Close to Tuggerah Westfield, M1, and school catchments Don't miss out on the ultimate lifestyle opportunity, Call Ian or Blair to book an inspection. Disclaimer: All information about the property has been provided to Ray White Berkeley Vale by third parties. Ray White Berkeley Vale has not verified the information and does not warrant its accuracy or completeness. Parties should make and rely on their own enquiries in relation to the property. We have obtained all information in this document from sources we believe to be reliable; however, we cannot guarantee its accuracy. Prospective purchasers are advised to carry out their own investigations.