

**57 Essence Parkway, Craigieburn, Vic 3064**



**Sold House**

Monday, 14 August 2023

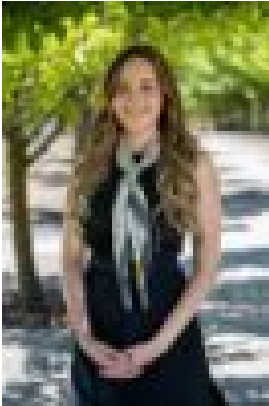
57 Essence Parkway, Craigieburn, Vic 3064

**Bedrooms: 5**

**Bathrooms: 2**

**Parkings: 2**

**Type: House**



Shayla Spiteri  
0412608153

**\$850,000**

With an abundance of natural light throughout this beautiful family home on 509m<sup>2</sup>\* offers great features and spacious living throughout - all in a family friendly location. With large family living in mind, this home offers a grand front formal lounge, downstairs guest bedroom, gourmet style kitchen with walk-in-pantry, adjoining open-plan dining area and family room leading out to an enormous sunroom area (complete with permit), perfect for all-year-round entertaining. Venture upstairs to an oversized upstairs retreat perfect for kids, huge master bedroom with private balcony, luxurious ensuite with double vanity & walk-in-robe, additional bedrooms with built in robes, and a sparkling main bathroom. This bold and beautiful home has many additional features including: Heating Cooling Downstairs powder room 4 living areas downstairs 1 kids retreat upstairs Remote double garage Internal access from garage Garden shed Side gate access Solar panels Alarm system Perfectly located in the popular Aston Estate, and directly across the road from Aitken Creek trails, this home is also close to Aitken Hill Primary School, Elevation Secondary College, Aston Fields, local shops, Craigieburn Central Shopping Centre, public transport and many more Craigieburn amenities. Call Trish Orrico on 0423 336 636 for more information.