

**57 Milford Drive, Rouse Hill, NSW 2155**



**Sold House**

Saturday, 16 December 2023

57 Milford Drive, Rouse Hill, NSW 2155

**Bedrooms: 5**

**Bathrooms: 2**

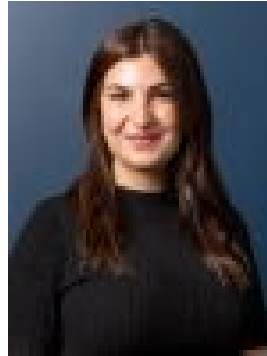
**Parkings: 2**

**Area: 617 m2**

**Type: House**



Shad McMillan  
0414887488



Loren Khamu  
0404864808

**\$1,740,000**

This warm and inviting single level home has both charm and sophistication. A fantastic family friendly floorplan that is immaculate throughout with beautiful timber trimming and lead light features. The light filled living areas begin with the elegant formal lounge room as well as a separate formal dining. Centrally located is the spacious family meals area and then you have the well positioned rumpus at the rear. All these areas flow so well between each other but can also be separated by the stylish timber doors. The classic gourmet kitchen offers plenty of cupboard space and bench space including a large breakfast bar and quality stainless steel appliances with a Miele dishwasher and a Smeg freestanding oven and gas cooktop. Throughout the home and well separated from the living areas are 5 generous bedrooms plus a convenient study. 2 Bedrooms have built ins and all bedrooms are serviced by a well appointed family bathroom with separate toilet. The master is privately located at the rear of the home and comes with its very own ensuite and walk in robe. The home also comes complete with ducted air conditioning, all gas appliances, a mix of tiled, hardwood floors and plush carpets and a remote double garage with under cover rear door access. The fully fenced and secure backyard features a huge entertaining area covered by a high set pitched roof pergola which extends out to a grassed area for the kids and family pets to enjoy. This popular location is super convenient with buses pretty much at your door and easy access to quality schools including Rouse Hill Public and High Schools, Our lady of the Angels and Iron Bark Ridge, fantastic family parks and sporting fields and great shopping at both the Rouse Hill Shopping Village and the Rouse Hill Town Centre with the North West Metro alongside.