

577 Rob Roy Rd, Inverell, NSW 2360

Mixed Farming For Sale

Monday, 15 April 2024



577 Rob Roy Rd, Inverell, NSW 2360

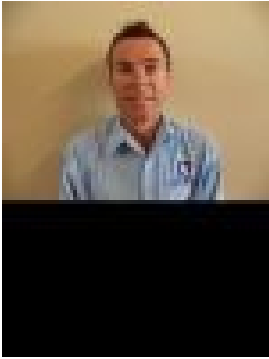
Bedrooms: 4

Bathrooms: 2

Parkings: 4

Area: 128 m²

Type: Mixed Farming



Matthew Mair



John Mair
0428326943

\$2,295,000

Exclusive New Listing! 'Glenbrook' Located 18kms West of Inverell, 90% arable with chocolate basalt soils, abundance of water with 1 solar equipped bore & 1 electric equipped bore, 2 dams, town water available(not connected), 2 bay machinery shed & hayshed, steel cattle yards with crush & loading ramp, 1 stand shearing shed. Immaculate 4 bedroom brick veneer family home with solar power, open plan kitchen/living area with wood heating & r/c air-con, formal dining/living area, main bedroom with ensuite, spa bath & WIR, 3 way bathroom, outdoor entertainment area, productive lifestyle/hobby farm that ticks all boxes and is rare on the current market!, 317 Acres - 128 ha.