

58 & 60 Belemba Avenue, Roselands, NSW 2196

Sold House

Wednesday, 6 September 2023



58 & 60 Belemba Avenue, Roselands, NSW 2196

Bedrooms: 6

Bathrooms: 2

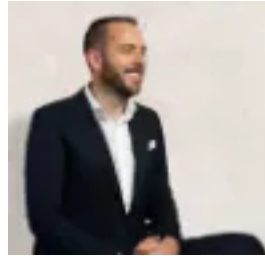
Parkings: 6

Area: 1935 m2

Type: House



Joe ElHourani
0296424288



Matthew Everingham
0296424288

\$3,452,000

Unrivalled Potential Townhouse Site Presenting Two Titles In One Line Presenting endless opportunities in a pin drop quiet cul-de-sac location and desirable lifestyle pocket, this premium parcel of land boasts a vast expanse of 1935.2sqm. Illustrating two titles in one line, take advantage of this rare offering with exceptional potential for redevelopment (Subject to Council Approval). ESSENTIALS & INCLUSIONS:- Sweeping 1935.2sqm (approx.) clear block with an impressive combined frontage of 20m - Peacefully set in a quiet, family friendly cul-de-sac street- R3 zoning presenting huge amounts of potential for the astute buyer- Offers significant potential to add value to already outstanding location through redevelopment or possible townhouse site (Subject to Council Approval)- Currently hosting two freestanding traditional brick homes, revealing functional and comfortable living with the possibility to be rented out for a low maintenance passive incomeLIFESTYLE & EDUCATION:- Close to a myriad of popular eateries and restaurants - Local schools such as Beverly Hills Girls High School, McCallums Hill Public School and St Joseph's Catholic Primary School- An array of parklands including Wiley Park, Clemton Park, and Flora Street Reserve- Walk to public transport links including Lakemba and Wiley Park Train StationDISCLAIMER: While Richard Matthews Real Estate have taken all care in preparing this information and used their best endeavours to ensure that the information contained therein is true and accurate, but accept no responsibility and disclaim all liability in respect of any errors, inaccuracies or misstatements contained herein. Richard Matthews Real Estate urge prospective purchasers to make their own inquiries to verify the information contained herein.