

58 Glebe Road, Newtown, Qld 4305



Sold House

Thursday, 24 August 2023

58 Glebe Road, Newtown, Qld 4305

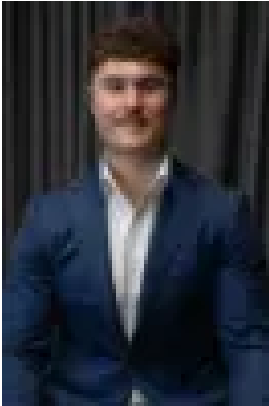
Bedrooms: 3

Bathrooms: 1

Parkings: 2

Area: 754 m2

Type: House



Charles Kimmorley
0477652889



Daniel Parsons
0466461772

\$560,000

Step into a world of timeless elegance and modern convenience with this remarkable character home positioned in one of Ipswich's most desirable locations... With its striking façade complimented by established trees & gardens offering a tranquil lifestyle, only a stones throw away from all the amenities you could possibly need, you'll never tire of coming home to this gorgeous abode. Here is your chance to buy a super affordable family home right in the heart of ever popular Newtown. This home would be perfect for first home owners looking to get into the market at an affordable price, downsizers looking for a quality home in a quality location, anyone looking to renovate and flip the home for a profit and everyone else in between! Upon entry you'll immerse yourself in the allure of yesteryear with original details meticulously preserved. From ornate doorknobs to vintage fixtures throughout, every corner of this home tells a story of its rich history. Hardwood floors that have withstood the test of time and intricate cornicing remind you of the craftsmanship that defines this era. This home boasts three generously sized bedrooms, each exuding their own unique charm. From the moment you step into these rooms, you'll be greeted by an abundance of natural light, built in robes providing ample storage space, and the kind of warmth that only a character home can provide. Servicing all, you'll discover the main bathroom with separate shower and bath perfect for the younger generations of the family home. Entering the living area, you'll find a seamless flow that connects each room with an open and airy feel. The living room is perfect for cozy gatherings or unwinding after a long day... The true jewel of this property is the large backyard, an expansive oasis where families can create lasting memories. The possibilities are endless (rear yard access) – barbecues, playtime, gardening, and relaxation all find their perfect space here. Let your imagination run wild in this private retreat that offers room for every member of the family to enjoy. Newtown is such a desired location not only due to its community feel but the locality to amenities and everything that Ipswich has to offer. Just a short stroll to Limestone Park & Queens Park. The Japanese gardens, wildlife sanctuary, tennis facilities, skatepark, basketball courts as well as an AFL field & cricket pitch. You're just a short drive from countless cafes and eateries as well as Silkstone's new shopping village with grocery stores, doctors facilities and more. You're also a mere 5 minute drive to Ipswich's CBD & 1 minute drive to Ipswich Girls Grammar School. With Ipswich slowly getting the recognition it deserves for being a top quality city, Newtown would be up there as one of the most sought after suburbs. You will have peace of mind that your investment and choice has been a great one. Listing agents: Charles Kimmorley & Daniel Parsons Call me now – I am waiting for your call! NGU Real Estate Ripley – The Kimmorley Group Results Speak Louder Than Words Disclaimer: NGU Real Estate Ipswich has taken all reasonable steps to ensure that the information in this advertisement is true and correct but accept no responsibility and disclaim all liability in respect to any errors, omissions, inaccuracies or misstatements contained. Prospective purchasers should make their own inquiries to verify the information contained in this advertisement.