

58 Neptune Circuit, Schofields, NSW 2762

House For Sale

Friday, 8 March 2024

58 Neptune Circuit, Schofields, NSW 2762

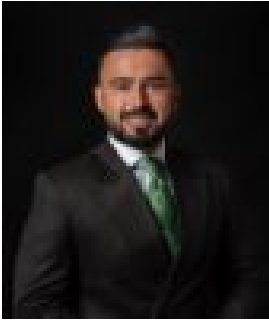
Bedrooms: 5

Bathrooms: 3

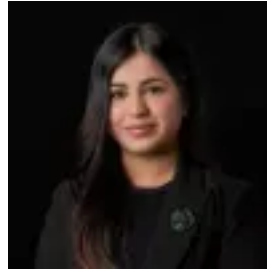
Parkings: 1

Area: 282 m2

Type: House



Amit Kumar
0288964336



Siya Sachdeva
0288964336

Price Guide \$980,000

Comfortable family home, located in the desirable suburb of Schofields, offering contemporary finishes that flow throughout. The home is situated in a vibrant neighbourhood, surrounded by essential amenities, and within walking distance to Riverbank Public School and The Ponds High School. This stunning property features a spacious five-bedroom with built-in robes, and three modern bathrooms with a convenient single lockup garage, providing ample space for relaxation and privacy. The home boasts a seamless blend of open living spaces, perfect for families seeking comfort and style. The Modern Kitchen has high-quality stainless steel appliances, stone benchtops, glass splashback, and abundant storage space. Some other features include:- Land size: 282 sqm- Beautifully manicured front and back gardens- Single lock-up garage with internal access- Plenty of visitor parking within the complex- Ducted air-conditioning- Ample storage space- Wonderful community and a low strata - Riverbank Public School & The Ponds High School catchment

Location highlights:- 5 minutes drive to Schofield Village and Schofields Train Station- 6 minutes drive to Tallawong Metro Station- 4 minutes drive to Riverbank Public School- 4 minutes drive to The Ponds High School- 6 minutes to local parks

With a location second to none, and well looked after by current owners this home is waiting to be called yours and presents opportunity and value second to none. For further questions and enquiries, please contact Amit Kumar.

Disclaimer: All information contained herein is obtained from property owners or third-party sources which we believe are reliable. We have no reason to doubt its accuracy, however we cannot guarantee it. All interested person/s should rely on their own enquiries.