

**58 Palm Beach Road, Palm Beach, NSW 2108**



**House For Sale**

Wednesday, 17 January 2024

58 Palm Beach Road, Palm Beach, NSW 2108

**Bedrooms: 4**

**Bathrooms: 4**

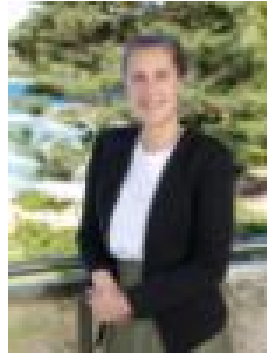
**Parkings: 2**

**Area: 1219 m2**

**Type: House**



Noel Nicholson  
0411884290



Tara Jaijee  
0299742300

## Contact Agent

Set in prime position in the exclusive Observation Point estate, this architecturally designed contemporary beach house soaks up spectacular views over Pittwater to the Western foreshores. Exuding contemporary luxury throughout its dual-level, streamlined design, this property offers outstanding space and privacy. The bright open-plan design of the ground level showcases the ease of living on offer, along with the quality of finishes. Floor to ceiling glass windows and bi-fold doors open to enhance the feeling of space, seamlessly combining indoor/outdoor living. The upper cantilevered outdoor terrace is designed to soak up the sun and summer breeze in dramatic style with glass balustrading and feature beams. The master suite is located on this level and offers a spacious retreat with large walk-in-robe and ensuite. Wake up to gum filtered views over Palm Beach wharf, or unwind to the spectacular Pittwater sunsets. The lower ground floor allows for the separation of accommodation, ideal for teenagers and guests with three further bedrooms and large family room opening onto a private entertaining deck. + Panoramic, grandstand views across Pittwater, the front row to glorious sunsets + Open plan interiors merge easily with a choice of outdoor entertaining decks + Expansive bi-fold doors, large windows and louvred glass to capture breezes+ Custom joinery, hard wood floors, new carpet in bedrooms+ Bespoke, oversized kitchen finished with stainless steel appliances+ Ducted climate control, Ceiling fans, Gas fireplace+ Double garage off the private driveway, ample storage throughout Just moments to the sands of Palm Beach, Pittwater, Palm Beach Lighthouse and Golf Course, this stunning dress circle residence on Observation Point is the epitome of Palm Beach living.