

**58 Playford Avenue, Whyalla, SA 5600**



**Sold House**

Friday, 2 February 2024

58 Playford Avenue, Whyalla, SA 5600

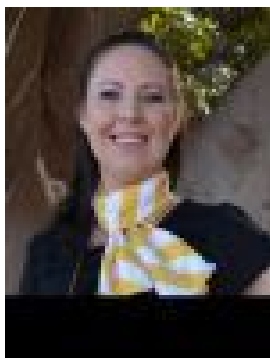
**Bedrooms: 4**

**Bathrooms: 1**

**Parkings: 1**

**Area: 736 m2**

**Type: House**



Leah Kirk

## Contact agent

Discover a wonderful haven for a joyful living experience in this unique 1968 double story home bursting with the original charm, comfort and unlimited potential. Showcasing a family-friendly design, this home boasts 4 bedrooms, 1 bathroom, a rumpus room, a generous size open shed and garage plus solar panels. Beautifully located on an allotment size of approximately 736m<sup>2</sup>, you are welcomed with a basket range stone frontage and an inviting tiled porch which overlooks the low maintenance appeal front gardens plus 2 car parking spaces for your vehicles. Upon entry you are greeted with a spacious living room for the whole family to enjoy which is filled with natural lighting from the good size window fitted with curtains. This area of the home is complete with carpeted flooring, a built-in cupboard, a ceiling fan plus a split system air conditioner for your comfort. Following through the home you are met with a combined kitchen and dining area featuring the original kitchen cabinetry offering plenty of storage and bench space, a double sink, a dishwasher, an upright electric oven and stove top plus a rangehood. Continuing down the hallway you are met with 3 bedrooms designed for comfort with bedroom 1 complete with carpeted flooring, curtains and blinds plus a split system air conditioner to keep you at the right temperature all year round. Bedrooms 2 and 3 also include curtains and blinds plus beautiful Jarrah floorboards to compliment each room. Also flowing off the hallway places a functional designed bathroom with a walk-in shower and separate bathtub plus a vanity. From bedroom 3 is a glass sliding door which opens up to a great size rumpus room complete with carpeted flooring, built-in cupboards under the stairwell plus views of the rear yard from the additional glass sliding doors - A perfect area of the home for extra required living space for all to enjoy. Leading up the stairs places a generous size fourth bedroom featuring carpeted flooring, downlights, a wall air conditioner for your comfort plus curtains fitted to the 2 glass sliding doors with perfect views. Following back down the stairs through the rumpus room doors opens up to a spacious rear yard offering plenty of room to move and play surrounded by neat and tidy gardens. To the rear of the yard there is a brick garage and an open shed with concrete flooring, lights and laneway access. A brilliant chance to secure yourself a unique home set in a vibrant community of Whyalla which is set within close proximity to schools, shops and transport. Don't wait, come see for yourself and start your new chapter. Council Rates: Approximately \$2,515.18 per annum Rental Appraisal: Available Upon Request Disclaimer: We have obtained all information in this document from sources we believe to be reliable; However we cannot guarantee its accuracy and no warranty or representative is given or made as to the correctness of information supplied and neither the owners nor their agent can accept responsibility for error or omissions. Prospective purchasers are advised to carry out their own investigations. All inclusions and exclusions must be confirmed in the Contract of Sale.