

58 Wetland Drive, Patterson Lakes, Vic 3197



House For Sale

Wednesday, 15 May 2024

58 Wetland Drive, Patterson Lakes, Vic 3197

Bedrooms: 4

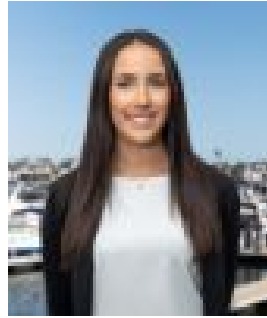
Bathrooms: 2

Parkings: 2

Type: House



Genevieve Hill
0397721088



Emily Hill
0491743110

\$1,400,000-\$1,540,000

Become the envy of everyone you know thanks to this beautiful 4-bedroom plus study residence adjacent the vast, calming expanses of the Wannarkladdin Wetlands. Taking in far-reaching, not-to-be-built-out vistas whilst enjoying direct access to walking trails that lead to the river and on to the bay, families who love peace and serenity as well as the great outdoors should look no further than this perfectly positioned home. This quality Carlisle-built Bordeaux home is immaculately presented throughout and includes a formal lounge, fully-equipped home theatre (screen, speakers, projector and cabinet) and a versatile open plan living/dining zone which is centred around a stunning gourmet kitchen with stone surfaces, quality appliances and large walk-in pantry. Banks of bi-fold doors extend the living outside to an undercover alfresco deck and impeccably manicured garden with tranquil water feature, which in turn leads to the open spaces beyond. All four bedrooms are positioned upstairs together with a large lounge area and sparkling spa bathroom. The decadent master is bound to impress thanks to its generous dimensions, private balcony, concealed wardrobe and ensuite with double shower and twin vanity. Other highlights included a downstairs home office, zoned ducted heating, refrigerated cooling, a full laundry with outdoor access, powder room, intercom and security alarm. A double auto garage with direct house access completes a truly appealing family package. Within moments of both Patterson Lakes & Chelsea Heights shopping destinations, this prized Harbour Town cul-de-sac is just minutes to local schools, Cornish College and bus stops as well as peninsula & city-bound freeways.