

58 Wybalena Grove, Cook, ACT 2614

home by holly

Sold Townhouse

Sunday, 20 August 2023

58 Wybalena Grove, Cook, ACT 2614

Bedrooms: 3

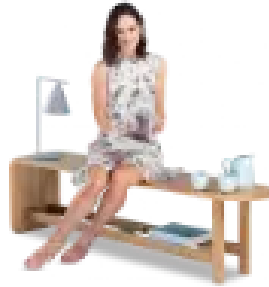
Bathrooms: 1

Parkings: 2

Type: Townhouse



Sally Strang + Ash Costello
0491850701



Ash Costello
0491850701

\$925,000

#soldbysally #soldbyash \$925,000 With distinctive, dark tiled roofs and stained timber, Wybalena Grove is an iconic example of late twentieth-century Sydney regional style of architecture. Designed by celebrated architect Michael Dysart, Wybalena Grove is recognised for its culturally significant role in Canberra's creation. An urban space that encourages community interaction, while respecting and welcoming the surrounding environment, Wybalena's design was innovative and ahead of its time. Integrating seamlessly with a natural bushland setting, Wybalena Grove epitomises everything we've come to love about living in the "Bush Capital". A sleek cohesion of suburban life and the Australian bush, Wybalena Grove expertly demonstrates how medium density living could - and should - be designed and constructed. Made for the discerning buyer, 58 Wybalena Grove, Cook, presents a rare opportunity to become part of a unique Canberra community. Positioned a premium position directly adjoining Mount Painter Reserve, this private townhouse will become your very own bushland oasis. Set across three split levels, with 2 bedrooms, a large study, and 1.5 bathrooms, this special property certainly packs design punch with gorgeous high ceilings, voids, lovely angles and classic timber finishes. Extensive use of glazing to the northern side, graces the home with a celebration of light. Wybalena Grove is a true bespoke beauty that will speak loudly to those who appreciate quality design and historical significance. features. designed by renowned architect Michael Dysart. premium position directly adjoining reserve. incredible natural light and visual connection with nature from every room. open plan courtyard entry with established garden. enclosed rear courtyard with low maintenance native landscaping. generous master bedroom and second bedroom on lower level with floor to ceiling sliding glass doors. multi-purpose third bedroom/ study. single carport plus allocated car space and easy access to visitors parking. bike paths with some of the best scenic views in Canberra and nearby bus stop with quick, direct connections to the ANU, CSIRO, and the City. short walk to local primary and secondary schools, Jamison Shopping Centre, and health and fitness facilities. abundant bird and other wildlife. ideal for bushwalking and walks to nearby Mt Painter with stunning views across the ACT and beyond. beautifully maintained communal facilities including playing field, pizza oven, playgrounds and tennis courts. EER: 1.5 Body corporate: \$952 per quarter (approx) Rates: \$767 per quarter (approx) Year built: 1977 Designed by the renowned architect, Michael Dysart, the complex of townhouses is an example of the 20th century Sydney regional style. Collaboratively built on 11 hectares of reserve, the buildings were designed to blend within the site, offering a combo of privacy and easy access to communal spaces. Tennis courts, pizza oven, community garden and children's playgrounds, engender a lovely, shared spirit. A solar generation system powers the lighting to the public areas.