

**58A Braesmere Road, Panania, NSW 2213**

AUSREALTY

**House For Sale**

Wednesday, 15 May 2024

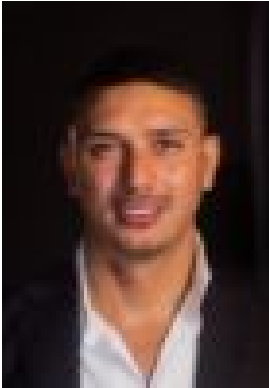
58A Braesmere Road, Panania, NSW 2213

**Bedrooms: 5**

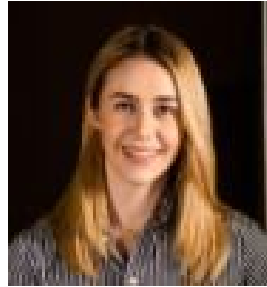
**Bathrooms: 5**

**Parkings: 5**

**Type: House**



Karim Alrefai  
0290718668



Caitlin Giannoulis  
0290718668

## Offers Invited

"This French Provincial-style home offers warmth, luxury, and excitement. We designed it so everyday you woke up feeling transported. With a spacious kitchen that overlooks the lounge and outdoor entertaining area, it's a peaceful haven for a new family to build happiness." - Builder- Brand new home combining French-style luxury with practicality, offering a family-friendly design, a supportive community, and a convenient location- Five bedrooms, with two master bedrooms featuring an ensuite, a walk-in robe, and access to a private balcony. The remaining bedrooms include built-in robes, offering privacy and space for family and guests alike- Five bathrooms in total, with the main bathroom bringing elegance through the sleek floor-to-ceiling tiles, floating vanity, glass-walled shower, and freestanding bathtub creating a luxurious experience every time- The open-plan dining and living area, along with a second living space on the ground floor, provide separate zones for family time, relaxation, and entertaining- The spacious kitchen includes high-end Smeg appliances, shaker-style cabinetry, a walk-in pantry, ample storage, and an Island benchtop with seating for casual dining- Enjoy the outdoors with an alfresco dining area, complete with a built-in BBQ and sink, overlooking the swimming pool, complete with an full bathroom outside. - This home also features air conditioning, a laundry area, and elegant wainscoting throughout. Double-brick construction ensures durability, while the lock-up basement garage offers secure parking for up to five cars- Located walking distance to Panania train station, schools, shops, and parks, whilst also moments to East Hills train station, this home provides excellent access to local amenities while maintaining a peaceful residential feel