

59/3 Homelea Court, Rivervale, WA 6103

Sold Apartment

Sunday, 25 February 2024

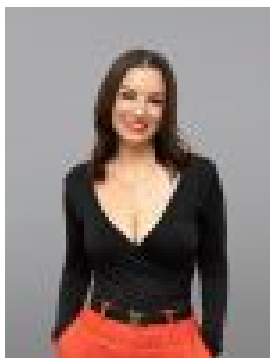
59/3 Homelea Court, Rivervale, WA 6103

Bedrooms: 2

Bathrooms: 2

Parkings: 1

Type: Apartment



Vanessa Naso
0419942106

\$515,000

Look no further! Located in the heart of Rivervale you would not only be looking to move into an immaculate like NEW luxury apartment, but you would be looking to embrace the resort lifestyle that comes attached to this pristine complex. This 2 Bedroom, 2 Bathroom plus huge courtyard ground floor apartment oozes style, space & quality finishes that were upgraded from the standard spec at time of build. From the moment you step foot in the door you are greeted by the open plan space of the kitchen / lounge / dining area all serviced by split system air conditioning. The well equipped kitchen is impeccably designed with plenty of storage space including stone bench tops with breakfast bar, Miele integrated dishwasher, Bosch electric oven and cook top and a filtered drinking water tap. The floor to ceiling double glazed glass doors open out to your very own HUGE courtyard area. Perfect for entertaining, with direct access to the lush complex gardens. The large master bedroom offers a double robe, split system reverse cycle air conditioning, a wall mounted TV and a spacious hotel like ensuite bathroom. Complete with double glazed glass sliding doors giving direct access to the courtyard. The second bedroom also offers a split system reverse cycle air conditioning and double robe. The main bathroom is complete with a bath & built in laundry with clothes dryer. This beautiful apartment has barely been lived in and is one of a kind. Why wait for a new build when you can have this TODAY! Just pack your belongings and move in!! Imagine coming home after a long day sipping your drink of choice in this tranquil private space of your own. Spring View Towers boasts some incredible facilities including 20m solar heated pool, a fully equipped gymnasium, pool lounge, BBQ entertaining area, games room and sauna. Intercom system, secured car bay in the basement and storage room. This property makes an excellent investment opportunity or suitable for first home buyers or downsizers. Well located with cafe's and Cracknell Park on the swan river within walking distance. Close to the CBD and Burswood entertainment complex. There is public transport close by and roads to take you wherever you need to go. You can't get more central than this. Strata Fees : \$1020.25 P/Q Contact Local Listing Agent Vanessa Naso NOW on 0419 942 106 to schedule your viewing. Come see for yourself the lifestyle this LUXURY apartment has to offer. Disclaimer: This information is provided for general information purposes only and is based on information provided by the Seller and may be subject to change. No warranty or representation is made as to its accuracy and interested parties should place no reliance on it and should make their own independent enquiries.