

**59 Darug Avenue, Glenmore Park, NSW 2745**



**Sold House**

Sunday, 15 October 2023

59 Darug Avenue, Glenmore Park, NSW 2745

**Bedrooms: 4**

**Bathrooms: 2**

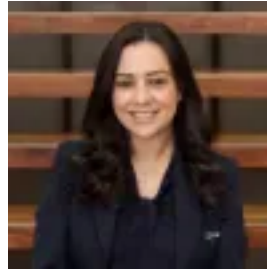
**Parkings: 2**

**Area: 484 m2**

**Type: House**



Trevor Holmes  
0247246600



stephanie radcliffe  
0247246600

**\$1,291,000**

**INCREDIBLE FAMILY HOME** This quality family home truly showcases everything you would expect for the modern family lifestyle; open plan living/kitchen diner, with multi-functional theatre room that could easily convert into a 5th/guest bedroom - giving you the ability to design the home as you need. Luxury extras are included such as ducted air conditioning, porcelain tiles, walk in pantry, plantation shutters, sliding patio doors and much more. From its gorgeous facade, to its high-end finishes and seamless floor plan, this wonderful home is sure to keep the entire family happy! With the weekends being taken care of too, as the home is perfectly located in the illustrious Mulgoa Rise area of Glenmore Park with a variety of recreational parks and tranquil walking tracks in close proximity. This really is a fantastic place to call home and is definitely a must to inspect! Features Include: \* Four bedrooms all with ceiling fans, ducted air-conditioning and built-in wardrobes, with the master room showcasing a spacious private ensuite with a double vanity and ample storage, along with a good sized walk-in wardrobe \* Main family bathroom with a built-in jacuzzi spa bath, a freestanding corner glass shower, and a large vanity for ample storage \* Centrally located kitchen overlooking the adjoining meals and living area, complete with a walk-in pantry and plenty of storage space \* Plenty of versatile living arrangements, with an open plan living and dining room expanding from the kitchen, while seamlessly flowing through to the outdoor alfresco \* Theatre room which could easily double as a 5th/guest bedroom \* Low maintenance rear garden complete with a garden shed for additional outdoor storage \* Internal laundry room with direct external access to the fold down clothesline \* Double garage with an auto door, direct internal access to the main hallway, and plenty of driveway space for additional off-street parking "We have obtained all information in this document from sources we believe to be reliable; however, we cannot guarantee its accuracy. Prospective purchasers are advised to carry out their own investigations."