

59 Hamilton Road, Bayswater North, Vic 3153



House For Sale

Saturday, 13 April 2024

59 Hamilton Road, Bayswater North, Vic 3153

Bedrooms: 4

Bathrooms: 3

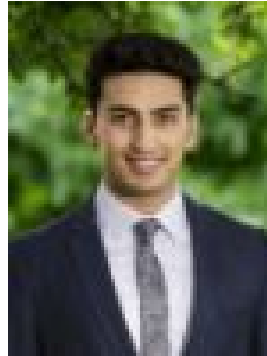
Parkings: 2

Type: House



Vivian Li

0398002222



Amir Hashemi

0412008721

AUCTION

THE PROPERTY Proudly positioned at the front of a stylish duo, this sophisticated four-bedroom home offers a luxurious, easy-to-manage lifestyle within easy reach of shops, trains and schools. Immaculately presented throughout, this modern retreat is in brand-new condition and under the new home warranty, allowing you to simply move in and enjoy the contemporary interiors. High ceilings and a generous open plan living zone greets you upon entry, bathed in natural light and opening effortlessly out to the tranquil alfresco deck and rear yard. Connoisseurs will appreciate the quality appointments in the sparkling kitchen, including waterfall island bench, premium appliances, gas cooktop and glass splashbacks, making every mealtime a breeze. Secluded and spacious, the ground floor master bedroom flaunting BIR and ensuite offers valuable versatility, with a second main bedroom located upstairs complete with a walk-in robe and ensuite. Two further built in robed bedrooms rest alongside the family bathroom boasting a stunning freestanding bath, while a double garage, split system heating and cooling, and the added benefit of no bodycorp, with secure parking make this deluxe home a must see.

THE FEATURES Near-new four-bedroom, three-bathroom, four-toilet, family home
Dual main bedroom options, one on each floor
Two further bedrooms all feature built-in robes
Luxe bathroom with freestanding bath, vanity & shower
Serene pergola overlooking good sized backyard
Large double garage with convenient internal access
Independent split system in all rooms for optimum control
Double glazed windows, with blinds and curtains throughout
Recycled Water tank
6 Star energy rating
LED Lighting throughout
Security alarm monitoring

THE LOCATION Ideally situated in a peaceful street within walking distance of Bayswater train station, shops and eateries, with Glen Park and Marie Wallace Park both nearby, as well as Tintervale Primary and Tintern Grammar, and Eastland, Westfield Knox and Eastlink all close by.

AUCTION - 4th of May at 12pm