

**59B Madeline Street, Glen Waverley, Vic 3150**



**Townhouse For Sale**

Wednesday, 7 February 2024

59B Madeline Street, Glen Waverley, Vic 3150

**Bedrooms: 5**

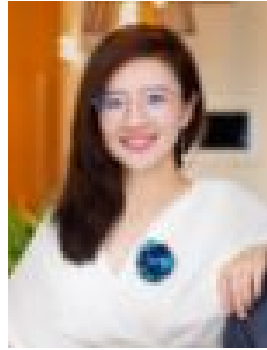
**Bathrooms: 4**

**Parkings: 2**

**Type: Townhouse**



Tony Che  
0433633333



Sunny Song  
0416832889

## **AUCTION \$1,590,000 - \$1,749,000**

Flaunting first class functionality for the multigenerational family, this near new residence stretches across three levels and encompasses a self-contained level that's reserved for in-laws or guests in the prized Glen Waverley Secondary Zone (STSA). Spilling out to the courtyard, the lower level includes an open plan living, dining and kitchen that includes a gas stove, oven and dishwasher with sliding doors onto a covered alfresco zone. Two robed bedrooms complete this level and presents in-laws with their own master bedroom accompanied by a walk-in-robe and ensuite, additionally served by a second bathroom with toilet. The mid-level of the home is the entry level, here you'll find a study, formal lounge/sitting room plus a living, dining and kitchen adorned with stone benches, island breakfast bench, quality appliances plus a walk-in pantry. A powder room and laundry complement this level, with the top floor featuring three robed bedrooms including the second master bedroom with walk-in-robe and ensuite, accompanied by the family bathroom with toilet. Detailed with sleek engineered Oak floorboards, carpet to bedrooms, split system heating/air conditioning, water tank plus a double garage. A clever lifestyle design in the Glen Waverley Secondary Zone (STSA), walking distance to Glen Waverley Primary, Wesley College, The Glen, restaurants, buses, Glen Waverley Train Station and reserves, whilst close to convenient freeway access points. Photo ID required at all open for inspections. Disclaimer: We have in preparing this document used our best endeavors to ensure that the information contained in this document is true and accurate, but accept no responsibility and disclaim all liability in respect to any errors, omissions, inaccuracies or misstatements in this document. Prospective purchasers should make their own enquiries to verify the information contained in this document. Purchasers should make their own enquires and refer to the due diligence check-list provided by Consumer Affairs. Click on the link for a copy of the due diligence check-list from Consumer Affairs.  
<http://www.consumer.vic.gov.au/duediligencechecklist>