

5a College Court, Newtown, Vic 3220



House For Sale

Thursday, 15 February 2024

5a College Court, Newtown, Vic 3220

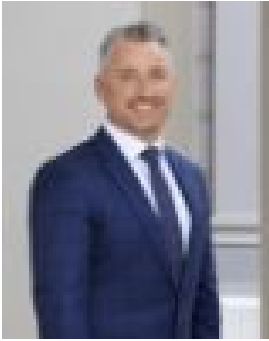
Bedrooms: 3

Bathrooms: 2

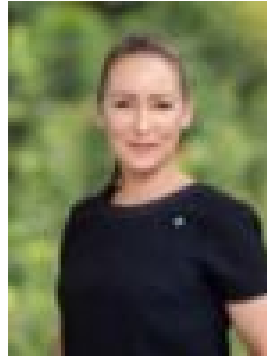
Parkings: 2

Area: 338 m2

Type: House



Marcus Falconer
0417376025



Rena Maniatakis Maniatakis
0423037828

Auction

Natural light and clean lines abound in this modern architecturally designed home tucked away in a quiet and convenient pocket of Newtown. Windows and sliding doors on three sides of the central north-facing courtyard, together with a clerestory window in the kitchen, combine to create a light and spacious ambience from the moment you open the front door. The combined kitchen, living and dining zone provides plenty of space for a full-size dining table and sofas and opens out to the low-maintenance courtyard for easy entertaining. There's abundant storage in the kitchen as well as stone benchtops, stainless-steel European appliances, including a 900mm Blanco oven and cooktop, island bench and breakfast bar. A walk-in pantry includes the laundry, with easy external access. All three bedrooms have built-in wardrobes and split-system heating and cooling, as does the living area. The main bedroom also features a sliding door out to a compact back garden, and an ensuite with walk-in shower. A central second bathroom and a separate toilet service family needs. The third, smaller bedroom could also double as a private study for those wanting to work from home. Other features include blackout blinds, a spacious double garage with direct internal access, abundant storage throughout and a water tank. On the doorstep of some of Geelong's best schools and shopping areas, this low-maintenance home is ideal for a busy family, corporate couple or downsizers. It is zoned to well-regarded Newtown Primary School, with Geelong College's junior and middle schools a couple of minutes' walk away and a childcare centre across the road. St Joseph's College, Sacred Heart College and Geelong College senior school are all convenient, too. Walk to footy and netball at Elderslie Reserve, local parks and the Shannon Ave shopping strip. Pakington St, Queens Park, the CBD and Barwon River walking trails are within easy reach, as is the Ring Road for Melbourne commuters or a trip to the beach.