

5a Dover Court, Somers, Vic 3927

THE COAST

House For Sale

Friday, 10 May 2024

5a Dover Court, Somers, Vic 3927

Bedrooms: 4

Bathrooms: 2

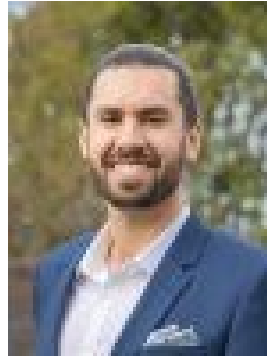
Parkings: 4

Area: 1616 m2

Type: House



Jackie Wright
0359831980



Andrew Wright
0481310010

\$1,800,000 - \$1,950,000

Discover the serenity of coastal living in this exquisite 4-bedroom retreat, perfectly suited for those seeking a beachside family haven or to reward yourself for the journey so far. Nestled in a coveted court location spanning 1616m², this home seamlessly merges with nature, offering a harmonious lifestyle and a serene oasis with the allure of the sea. Bathed in natural light, the heart of the home boasts a spacious kitchen finished with Meile appliances, including an induction cooktop, conventional oven, and combo oven. Stone benchtops and a central island bench/breakfast bar beckon to those with a flair for culinary artistry. Entertain with the living space, seamlessly flowing onto the picturesque terrace and rear garden. Bask in sun-soaked afternoons on the paved alfresco terrace, with views extending into the adjacent parklands. Retreat to the master bedroom, offering generous proportions, a deluxe ensuite, and walk-in robes, ensuring every day begins and ends in comfort. Across the hall, a versatile fourth bedroom or study awaits, while the family/guest wing to the rear features two bedrooms with robes, serviced by a large bathroom complete with a shower and deep tub – perfect for unwinding after a day of beachside bliss. Convenience is paramount, with a separate family room and dining area capturing the morning sun and garden views, while large format floor tiles extend throughout the home. Practicality is at the forefront, with ample storage including generous linen cupboard, 300+ bottle wine storage, spacious laundry, and both double garage and double carport. Embrace the coastal tranquillity and embark on your next phase of living in this prized sanctuary, where every moment is a testament to the beauty, function, and easy living. Welcome home to your piece of beachside paradise. Features include: * Promenade beach, Coolart and the Koala reserve a few minutes' walk. * Native and flowering trees / shrubs, rockeries, prolific lemon and lime trees. * Ducted heating / cooling, wood fire and ceiling fans, 10kw solar system. * Double garage with rear access, plus double carport and garden shed. * Land 1616m² approx. General Residential Zone