

# 5A Luton Court, Croydon, Vic 3136



## House For Sale

Wednesday, 29 May 2024

5A Luton Court, Croydon, Vic 3136

Bedrooms: 3

Bathrooms: 2

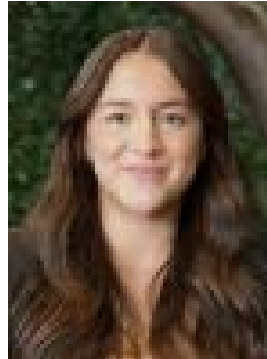
Parkings: 2

Area: 353 m2

Type: House



Phil Licciardi  
0408808108



Victoria Carrabbia  
0487277030

**\$950,000 - \$1,040,000**

This striking, individually-titled residence is designed and located for an incredible lifestyle. It is situated within walking distance to bus services, Mullum Mullum Creek Trail, McAdam Square with its specialty stores, popular eateries and take away shops, Luther College, Yarra Valley Grammar, Good Shepherd Primary School, Lipscombe Park and Kindergarten. It is also only a short commute to Croydon's town centre complete with a train station and vibrant main street, as well as Eastland and EastLink.- Wrapping the corner of a court, with meticulously landscaped gardens and its own driveway, this modern residence impresses from the outset- Inside, gorgeous contemporary flooring highlights its interior expanses, where easy living is executed over two light-immersed levels- The spacious living and dining room enables seamless indoor-outdoor entertaining, opening via sliding stacker doors to a low maintenance garden with a paved alfresco- A sleek showpiece kitchen services these spaces, featuring a full suite of Westinghouse stainless steel appliances, black glass splashbacks, a garden window, a walk-in pantry, stone benches and a breakfast island- A well-equipped laundry with external access to a cat run provides convenient storage and a safe outdoor space for one's feline friends to enjoy- A wash closet with a basin complements the ground floor of the residence- Upstairs, another wash closet services the top floor of the residence- A relaxing retreat area anchors this floor, featuring a double-door storage cupboard- Three robed bedrooms are arranged off the retreat area. The main bedroom boasts a walk-in wardrobe and an en suite, while the other rooms share a communal bathroom- Further quality features that complement this standout residence include ducted heating and refrigerated air conditioning, block-out blinds with privacy screens and a remote double garage with internal access