

5A Stanton Close, Mount Martha, Vic 3934



House For Sale

Friday, 22 March 2024

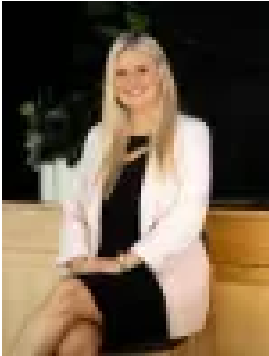
5A Stanton Close, Mount Martha, Vic 3934

Bedrooms: 4

Bathrooms: 2

Parkings: 4

Type: House



Jade Springer
0359852600



Ben Nutbean
0413125996

\$1,370,000 - \$1,470,000

GRAND OPENING SATURDAY 30TH AT 2:30PM Newly constructed and built with incredible attention to detail, this truly magnificent Mount Martha residence has been artfully crafted to showcase the ultimate in refined coastal living, delivering a long list of premium, custom inclusions and offering a rare opportunity to secure one of the finest properties on the Peninsula. With an immediate sense of relaxation and calm, the sophisticated yet laid back interiors present four generous bedrooms, two stylish bathrooms complete with floor to ceiling tiles, semi-frameless shower screens and a luxurious soaking tub, separate laundry room, and an expansive, light-filled open concept kitchen, living and dining room that connects with ease to the substantial adjoining outdoor entertaining space. The large primary retreat features a sumptuous his & her walk-in robe, and an elegantly appointed ensuite featuring double vanity with stone counter, floor to ceiling tiles, and a semi-frameless walk-in shower with niche and rainhead. Incorporating stylish design elements straight from the pages of home beautiful and featuring a curated list of inclusions such as large east facing picture windows, coastal laminate flooring, wool carpets, quality appliances, gorgeous white plantations shutters and floor length sheers, this beautiful home shines from every angle. Classically coastal yet dripping in modern convenience, the stunning kitchen reveals a gorgeous 900mm integrated gas cooker, stainless steel dishwasher, crisp white cabinetry, under mount sink and refined stone counters, plus an additional hidden scullery with a single sink and ample storage. Outdoors, there are multiple places to either entertain, unwind, or take in the serenity. Whether it be cooking up a BBQ lunch for family and friends on a warm summer's day on the deck, sitting around the firepit with a nice glass of wine and a bowl of risotto in the cooler months, or playing a game of backyard catch with the kids on the lush green lawns – this magical space will be a family haven for many years to come. Situated in one of the most sought after positions on the Mornington Peninsula, from this prized location you are within minutes to the stunning Mount Martha coastline, and just a short drive to Benton's Square, Mount Martha Village and Mornington Main Street where you will find mouth-watering restaurants, local cafes, and wine bars. Further features include LED downlights, rainwater tank, double glazed windows, ducted heating, refrigerated cooling, exposed aggregate driveway, double remote lock up garage, and six star energy rating. Property Features Include:- Brand New four bedroom, two bathroom residence.- Single story home ideal for those looking to downsize.- Six star energy rating and under full builders warranty.- Four spacious bedrooms, master with WIR and ensuite featuring floor to ceiling tiles, double basins, and shower niche.- The second bedroom located at the front of the home serves as a second primary suite with WIR and entrance to the main bathroom - perfect for dual families or the potential to make Airbnb income. - Main bathroom featuring freestanding Kado Lux Oval bath, floor to ceiling tiles, bathroom niche in shower and stone bench tops.- Two spacious living areas.- The main living space connects seamlessly with the outdoor entertaining area through dual sliding doors – ideal for your round alfresco dining.- Designer kitchen featuring dishwasher, 900mm oven and stone bench tops.- Butler's pantry with a round sink and ample storage space.- Ducted heating & refrigerated cooling.- "CORREA" GUMNUT 100% wool fibre carpeting and floating laminate flooring throughout. - 9ft ceilings. - Double glazed windows. - Beautifully landscaped gardens; front featuring lush grass, ornamental pear trees, weeping cherry & Japanese maple. Rear yard is fully fenced and includes a cosy fire pit surrounded by jasmine walls, Ornamental pears, and a beautiful Japanese maple. - Exposed aggregate driveway and double garage.- Great location close to the breathtaking Mount Martha coastline, Mount Martha Village, Benton's Square, and Mornington Main Street.*All distances and measurements are approximate only.