

6/1 Park Ave, Clayfield, Qld 4011



Sold Townhouse

Thursday, 29 February 2024

6/1 Park Ave, Clayfield, Qld 4011

Bedrooms: 2

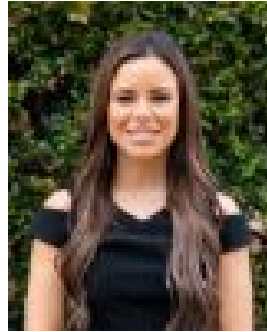
Bathrooms: 2

Parkings: 2

Type: Townhouse



Libby Patrick
0419122350



Claudia Rocha
0413939470

\$790,000

Offering a rare mix of comfort, convenience and privacy, 6/1 Park Ave, Clayfield is an inner-city retreat, is perfect for the first home buyer, young family, downsizer or astute investor. Boasting a not only functional but desirable floor plan, this 2 bedroom, 2.5 bath townhouse is embellished with a large yard and lock up garage. Positioned neatly on the lower level is the open living space, renovated kitchen, separate laundry room and secured remote controlled lock-up garage. The upper level features 2 bedrooms and a main bathroom gilded by a surplus of natural light and ventilation. Property Features:- Fully renovated- 2 well sized bedrooms with built in robes- Main bedroom with ensuite, air conditioning and private balcony- Renovated kitchen with ample storage, gas cook top, stone bench tops overlooks the living/ dining area- 2.5 Bathrooms- Large rear yard with side access- Ceiling fans throughout - 7.7km to Brisbane CBD- Walking distance to public transport: Eagle Junction Train Station & bus stops- 9 minute trip to Brisbane's Domestic & International Airport- Eagle Junction State School and Kedron State High School Catchment This highly desirable position is one not to be missed. The tightly held community of Clayfield is one of the Northsides hidden gems. Whether you're a growing or established family, this town-home has something for everyone. For further information or to arrange a private viewing, please contact Libby Patrick or Claudia Rocha.