

# 6/11 Young Road, Hallam, Vic 3803

**P&G** REAL ESTATE

## House For Sale

Tuesday, 21 May 2024

6/11 Young Road, Hallam, Vic 3803

**Bedrooms: 4**

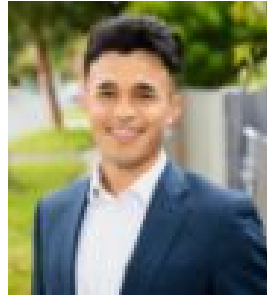
**Bathrooms: 2**

**Parkings: 3**

**Type: House**



Ahmed Mahmoud  
0395878881



Noah Rezaie  
0477799015

**\$680,000 - \$748,000**

Stunning double-storey townhouse that effortlessly combines style and comfort. This modern residence features spacious rooms and beautifully designed new bathrooms, providing the perfect backdrop for contemporary living. With its sleek finishes and thoughtful layout, this townhouse offers a welcoming and elegant space for and the whole family to enjoy!! This property has so much to offer, including:

- Four spacious bedrooms; three fitted with built in robes and split system units
- Massive master bedroom features a large built in robe and ensuite featuring stone top vanity, an oversized rain shower, and toilet
- Two separate living areas across two floors; including a downstairs open plan family/dining and an upstairs rumpus area
- Gorgeous modern kitchen showcases stone benchtops and quality Bosch appliances, including a gas stove and built in oven, plus a dishwasher, walk in pantry and ample cupboard space for storage
- Main bathroom is equipped with an oversized rain shower, bathtub, stone top vanity and separate toilet; plus an additional downstairs powder room
- Split systems throughout will keep you comfortable all year round
- Laundry room features ample built in storage
- High ceilings are a standout feature
- Double glazed windows throughout
- Paved pergola area flows from family/dining room and creates the perfect space for entertaining and outdoor meals
- Outdoor space is landscaped and adds an elegant touch to the home
- Double car remote controlled garage as well as additional open car spaces

A convenient location completes the whole package! Close to home, you will find a variety of great schools. Within a 5 minute drive, you can find Hallam Primary School, Hallam Secondary College, Hallam Kindergarten. Dandenong Valley School, Ashton College and Thomas Mitchell Primary School are all within a 10 minute drive. For all of your shopping needs, you can find a Coles supermarket within a 3 minutes' drive, while Westfield Fountain Gate is a 7 minutes' drive away and Hampton Park Shopping centre is a 10 minutes' drive. Hallam Railway station is reached in 5 minutes', there are a variety of bus stops close to home and access to the Monash Freeway is close by and easily accessible.