

6/12 Poulton Close, Heathmont, Vic 3135



Townhouse For Sale

Wednesday, 8 May 2024

6/12 Poulton Close, Heathmont, Vic 3135

Bedrooms: 3

Bathrooms: 2

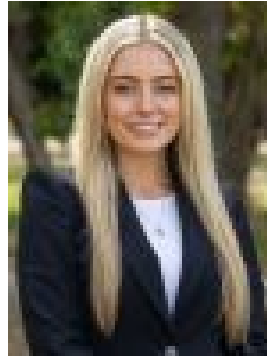
Parkings: 2

Area: 289 m2

Type: Townhouse



Marcus Lim
0433044038



Ella Rait
0424669181

\$790,000 - \$840,000

Capturing the low-maintenance lifestyle dream with effortless style and space, this conveniently placed split-level unit is perfect for families, couples and investors, moments from quality schools, shops and transport. Serenely set at the end of a quiet cul-de-sac, the home's bright and welcoming interior provides for a spacious lounge room, flowing through to an attractive kitchen and meals zone incorporating glass splashbacks, stainless steel appliances, Westinghouse dishwasher and a delightful breakfast bench. Running along the hallway, there are three robed bedrooms, including the master suite with walk-in-robe and ensuite, supplemented by a neutrally toned family bathroom, separate toilet and full-sized laundry. Further complemented by a generously sized backyard with paved entertaining zone, ducted heating, split system air conditioning plus a double garage with covered access to the home. Superbly positioned, within close proximity to reserves, walking/cycling trails, Heathmont Village shops and eateries, Heathmont Train Station, Heathmont East Primary, Heathmont College, Aquinas College, Tintern Grammar, Heathmont Golf Park, Aquanation, Eastland Shopping Centre plus Eastlink.