

6/14-15 Brewer Street, Concord, NSW 2137

DibChidiac®

Sold Townhouse

Friday, 6 October 2023

6/14-15 Brewer Street, Concord, NSW 2137

Bedrooms: 3

Bathrooms: 2

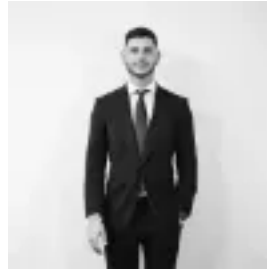
Parkings: 2

Area: 258 m2

Type: Townhouse



Dib Chidiac
0291366472



Alex Cummins
0291366472

\$2,115,000

This well-designed modern townhouse delivers a fresh easy-living haven that comes with a superb location close to the heart of all the attractions that make Concord such a popular lifestyle suburb. It features a smart tri-level design that provides a sleek executive home with chic contemporary interiors, a landscaped wraparound courtyard and a quiet setting within an exclusive group of designer residences. The location directly opposite Edwards Park enjoys every convenience and has Majors Bay Road village, bus transport and Massey Park Golf Club all within strolling distance.- Bright open living space featuring cool polished timber flooring- Easy flow to a landscaped courtyard and entertainment patio- Quality modern kitchen with stone benchtops and dishwasher- Newly carpeted upstairs bedrooms each have built-in storage- Fully carpeted attic-level retreat or home office with sky window- Direct internal access to a huge 32sqm double lock-up garage - Security building with video intercom and security alarm system- Reverse cycle ducted air-con, high 3.5m ceilings and natural light- Approx. outgoings per qtr: Strata: \$1,460; Council: \$332 & Water: \$173