

6/14 Templeman Crescent, Hillsdale, NSW 2036

WENTWORTH PARTNERS

Apartment For Rent

Wednesday, 15 May 2024

6/14 Templeman Crescent, Hillsdale, NSW 2036

Bedrooms: 2

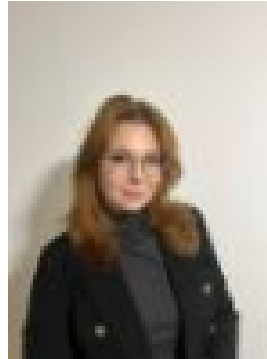
Bathrooms: 1

Parkings: 2

Type: Apartment



George Savva
0283833333



Elena Sladkova
0283833333

\$715 Per Week

This freshly renovated apartment has modern finishes throughout, it provides an excellent living space that delivers on quality, location and price. It is situated in a peaceful position and offers an exceptional lifestyle with modern finishes, natural lighting, private and secluded. The property is well positioned close to Southpoint Shopping Centre, Heffron Park and transport to the city. - Small block of 6- Freshly painted throughout- Modern interior layout with new floorboards throughout - Brand new kitchen with gas cooktop, electric oven and a dishwasher - Good sized bathroom with brand new shower and vanity- Two bedrooms both mirrored built-ins- Two car spacesIn close proximity to Coogee beach, Maroubra beach, Westfield Shopping Centers, Local Schools and public transport.