

6/18 Hainsworth Street, Westmead, NSW 2145



Sold Townhouse

Friday, 12 April 2024

6/18 Hainsworth Street, Westmead, NSW 2145

Bedrooms: 2

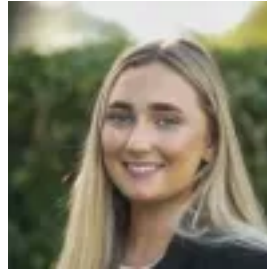
Bathrooms: 1

Parkings: 1

Type: Townhouse



Rocco Ranieri
0296304888



Emily Ranieri
0296304888

\$645,000

CENTRALLY LOCATED TOWNHOUSE IN THE WESTMEAD MEDICAL PRECINCT Nestled in the heart of the esteemed Westmead Medical District, this centrally positioned townhouse offers an exceptional opportunity for both investors and owner-occupiers. Situated within a well maintained complex, this property boasts:

- Two generously sized bedrooms, with the master featuring a built-in wardrobe and private balcony
- Spacious bathroom with separate bath and shower facilities
- Abundant storage solutions throughout the property
- Open-plan living and dining area, perfect for modern lifestyles
- Spacious kitchen with ample cupboard space
- Convenient internal laundry facilities
- Carport conveniently located at the entrance
- Potential for renovation or customization to suit personal preferences
- Ready to occupy as soon as possible
- Prime location near Westmead Hospital, with easy access to bus and rail interchange, soon to be completed metro station and opposite the new Parramatta light rail stop which is at the front of the building
- Parramatta Park access is at the end of street and Parramatta CBD is also within walking distance

Approximate distance to key locations:

- 200m - Westmead Children's Hospital
- 300m - Westmead Public Hospital
- 750m - Western Sydney University Westmead
- 1km - Westmead Public Hospital
- 1km - Westmead Train Station
- 1.3km - Westmead Public School
- 2.2km - Westfield Parramatta

Outgoings (per quarter approx.) Strata: \$780 Council: \$316 Water: \$240

DISCLAIMER: "All information contained herein is gathered from sources we believe to be reliable. However, R&W Parramatta cannot guarantee its accuracy and interested persons should rely on their own enquiries". Property styled for marketing purposes only.