

# 6/18 Stapley Crescent, Altona North, Vic 3025

## Townhouse For Sale

Tuesday, 7 May 2024



6/18 Stapley Crescent, Altona North, Vic 3025

**Bedrooms: 3**

**Bathrooms: 2**

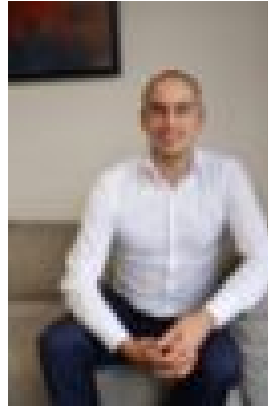
**Parkings: 2**

**Area: 242 m2**

**Type: Townhouse**



Leonard Siragusa  
0393478886



James Smarrelli  
0447839809

**\$780,000-\$850,000**

Introducing the perfect package for busy young professionals seeking a new low-maintenance home or downsizers needing secure single level accommodation & a double lock up garage on the border of popular Newport. Nestled at the rear of a private enclave of residences, this designer style 3 bedroom dream retreat offers; \*A thoughtfully designed layout with a main bedroom, featuring a lavish ensuite and walk-in robe, well separated from the other 2 bedrooms with built-in robes \*A sleek kitchen equipped with electric induction appliances, generous butler's pantry, and stoned breakfast bench, seamlessly flowing into the open plan living and dining spaces plus sunny outdoor area \*Luxe bathrooms with twin hand-held & rain head showers, niches, above counter basins & wall mounted vanity units \*A separate study area perfect for working from home; a separate laundry with extra storage space & internal access from DLUG. \*High ceilings & higher than standard door heights giving the impression of a volume of space, engineered timber floors throughout & quality carpet to the bedroom \*Double glazed windows, split system heating/cooling, water tank & external storage shed. Step outside and walk to the Circle's shops & Second Avenue Grocer, Millers Junction precinct with the new Reading cinemas, Altona Gate shopping & Borrack Square. Near Bayfit Leisure Centre, Newport Lakes Reserve, parkland, waterfront cycling paths & swimming beaches plus easy access to Spotswood's Grazeland, Williamstown's Nelson's Place and the freeway into the Melbourne CBD. Embrace the lifestyle you've always dreamed of and make this exceptional home yours! RENTAL ESTIMATE: \$700-\$730 per week