

6/2 Allen Street, Harris Park, NSW 2150



Unit For Rent

Friday, 3 May 2024

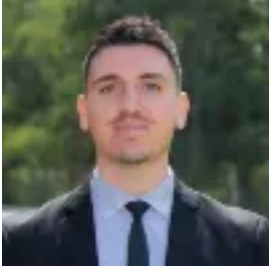
6/2 Allen Street, Harris Park, NSW 2150

Bedrooms: 2

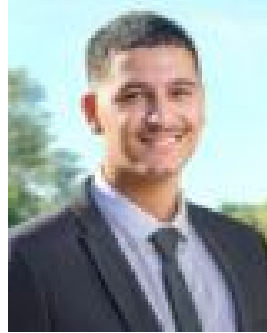
Bathrooms: 1

Parkings: 1

Type: Unit



Adriano Tassone
0298913333



Ali Awick
0298913333

\$720 per week

PLEASE REGISTER YOUR INTEREST USING THE BOOK INSPECTION LINK TO ENSURE YOU DO NOT MISS OUT ON THE UPDATES FOR THIS PROPERTY. THOSE NOT REGISTERED MAY MISS OUT ON A VIEWING OPPORTUNITY

THANK YOU Step into comfort and convenience with this exquisite 2-bedroom unit, perfectly situated to enhance your lifestyle. The spacious layout welcomes you with floating floorboards throughout, providing a seamless blend of style and comfort. The generous master bedroom offers a retreat-like ambiance, complemented by built-in robes and air-conditioning for year-round comfort. Entertain guests or unwind on the good-sized balcony, thoughtfully designed with full netting to ensure uninterrupted relaxation. The modern kitchen is a chef's delight, boasting a glass cooktop, stainless-steel oven, and ample storage space. Adjacent, the internal laundry adds practicality to your daily routine. With a dedicated lock up garage commuting is a breeze. Plus, enjoy easy access to a range of amenities including reputable schools such as Rose Hill Public School, Macarthur Girls High School, and Arthur Phillip High School. For commuters, Harris Park Train Station is conveniently located just 1.4km away, while Westfields Parramatta and Rosehill Woolworths are within easy reach, ensuring all your shopping needs are met. Experience the epitome of modern living combined with unparalleled convenience in a private complex. Make this dream unit your reality today. Ray White Parramatta Group - Parramatta | Oatlands | Northmead | Greystanes, its directors, employees & related entities believe that the information contained herein is gathered from sources we deem to be reliable. However, no representation or warranties of any nature whatsoever are given, intended or implied. Any interested parties should rely on their own inquiries