

6/22-26 Robert Avenue, Broadview, SA 5083



Sold Unit

Friday, 3 November 2023

6/22-26 Robert Avenue, Broadview, SA 5083

Bedrooms: 3

Bathrooms: 1

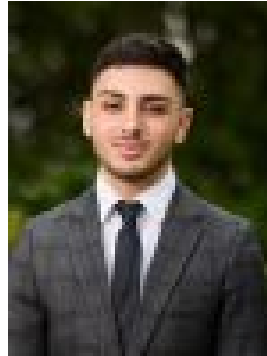
Parkings: 2

Area: 144 m2

Type: Unit



Nick Borrelli
0861871302



Cristian Aloisi
0431465222

\$460,000

Discover the perfect blend of space, comfort, and convenience in this stunning unit in Broadview, now available for sale. Boasting an abundance of natural light throughout the property, this unit is a true gem for the savvy investor, downsizer or growing family. The unit's bright and airy atmosphere is enhanced by an array of windows that grace every room. As you step inside, you'll be greeted by a sense of warmth and openness that invites you to make it your own. The unit features a spacious lounge area, perfect for unwinding after a long day, a separate meals area, and a U-shaped kitchen. The kitchen is equipped with a double sink, ample storage space, and a convenient gas cooktop, making it a chef's delight. Whether you're hosting a dinner party or enjoying a quiet meal, this space has you covered. With three well-appointed bedrooms, this unit provides plenty of options. Bedrooms 1 and 2 are generously sized, featuring built-in robes and ceiling fans for your comfort. Experience peaceful nights and organized living in these well-designed spaces. The main bathroom offers a separate shower and bathtub, along with a spacious vanity making your daily routines become a breeze. Step outside to your private patio courtyard, an ideal setting for outdoor entertaining or relaxing. A handy tool shed is also included for your convenience. You'll have a single carport at your disposal, ensuring your vehicle is sheltered and secure & an additional open parking space. Perfectly located within easy reach of all amenities. Public transport is a short walk to Regency or Hampstead Roads. Shopping at Northpark Shopping Centre, Northgate Plaza & The Churchill Centre is easily accessed, as is the new Walkerville Shopping Centre. The numerous parks and reserves of the area are at your disposal for recreation and exercise, including The Broadview Oval and Tennis Club, Klemzig Reserve and the River Torrens Linear Park. Zoned to Nailsworth Primary and Roma Mitchell Secondary College. Local private schools include Our Lady of the Sacred Heart College, Heritage College, Cedar College, Wilderness School, Prescott College and Blackfriars Priory. Currently tenanted at \$440 per week until March 2024. Disclaimer: As much as we aimed to have all details represented within this advertisement be true and correct, it is the buyer/ purchaser's responsibility to complete the correct due diligence while viewing and purchasing the property throughout the active campaign. Property Details: Council | PORT ADELAIDE ENFIELD Zone | GN - General Neighbourhood \\\Land | 167sqm (Approx.) House | 144sqm (Approx.) Built | 1975 Council Rates | \$1034.9 pa Water | \$153 pq ESL | \$187 pa