

6/228 Moore Park Road, Paddington, NSW 2021



Sold Apartment

Friday, 12 April 2024

6/228 Moore Park Road, Paddington, NSW 2021

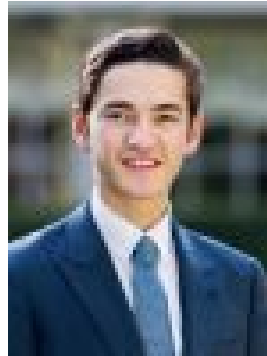
Bedrooms: 1

Bathrooms: 1

Type: Apartment



Clay Brodie
0293573434



Raj Arnott
0293573434

Contact agent

Set within a 1916 heritage building, this smartly converted security apartment is a unique inner city living space. Designed in a fresh contemporary style, the spacious apartment features sleek open plan interiors stretching out to a north-facing balcony. It also boasts exceptional resort-style facilities and a sensational setting, within a moment's stroll of Centennial Park, the Football Stadium and a world-class assortment of cafes, bars and restaurants.- One double bedroom with built-ins, stylish modern bathroom, concealed laundry- Sleek stone kitchen with Smeg oven, gas cooktop and dishwasher- Expansive open plan living and dining room extending to balcony- Visitor parking, heated swimming pool, spa, sauna, gymnasium- Quality investment in one of Sydney's most sought-after locations