

6/25-31 Haddon Crescent, Marks Point, NSW 2280

Villa For Sale

Thursday, 9 May 2024

6/25-31 Haddon Crescent, Marks Point, NSW 2280

Bedrooms: 3

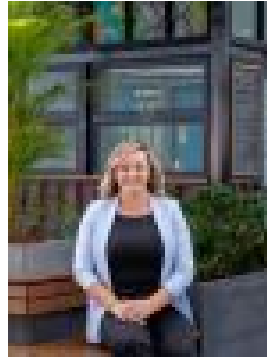
Bathrooms: 1

Parkings: 1

Type: Villa



Peter Shiels
0422479552



Natalie Francis
0423606510

Contact Agent

Nestled along the serene shores of Marks Point, 6/25 Haddon Crescent unveils a tranquil haven where every sunrise and sunset paints a masterpiece across the expansive canvas of Swan Bay. This single-level brick villa epitomizes waterfront living, whether you're savouring morning coffee in the kitchen or unwinding in the spacious lounge area, panoramic views of the lake envelop every moment, casting a spell of tranquillity and serenity. Embrace a lifestyle of unparalleled beauty and relaxation in this idyllic abode, where the ebb and flow of the water become your constant companion. With three bedrooms, each space exudes warmth and charm, inviting you to unwind in style. Beyond the walls, discover a world of limitless opportunities. Delight in the allure of a shared pool just steps from your door, inviting you to bask in refreshing serenity during balmy summer afternoons. Alternatively, meander along the waterfront promenade, where leisurely strolls seamlessly transition into thrilling water adventures, all conveniently accessible from your doorstep.

Property Highlights:- Absolute waterfront single level unit with lake views- Open plan layout with beautiful filtered natural light - Plush carpeting flows throughout the home- 3 generously sized bedrooms with ceiling fans- Bed 1 and 2 offer a large robes with ample storage space- Generously sized kitchen with electric cooktop and oven- Under Counter dishwasher- Generously sized bathroom with shower.- Separate W/C- Bay windows providing lake and complex pool views - Reverse cycle air conditioning unit in dining/lounge- Single car garage - Fully fenced courtyard - Zoned for Marks Point Public School and Belmont High School- Minutes walk to cafe options- A short 3.5km to Belmont Citi Centre and 4.3kms from the hussle and bussle of Swansea shops, providing ample shopping solutions and restaurants