

6/343 Williamstown Road, Port Melbourne, Vic 3207 **JellisCraig**

House For Sale

Wednesday, 12 June 2024

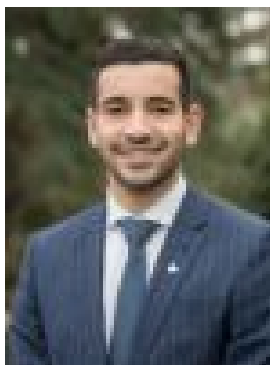
6/343 Williamstown Road, Port Melbourne, Vic 3207

Bedrooms: 3

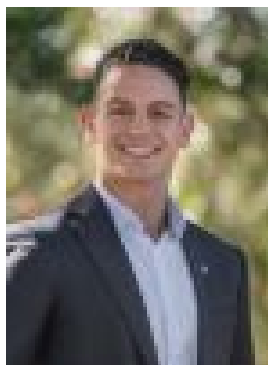
Bathrooms: 2

Parkings: 1

Type: House



Max Mercuri
0431043723



Marcus Varrasso
0414616575

Auction Saturday 29 June, 10:00am

Architectural brilliance positioned on parklands with beautiful views on all levels from corner positioned residence. Wrap around courtyard allows for two entrances. Ground floor has two bedrooms, one of which can be a separate office has its own entry off the park, central designer bathroom, euro concealed laundry and entry from secure undercover car space. Level 1 comprises generous kitchen with Miele appliances / breakfast bar opening to open dining and living room. There is a large floor to ceiling feature window taking in the parkland views. Also, a powder room on this level. Level 2 showcases the main bedroom with its own private balcony overlooking the parklands and city skyline. The ensuite has double vanity, double shower, architectural custom cabinetry, and built-in robes. Also designated study/office zone. Level 3 boasts an incredible entertainer's roof terrace with 180degree views from City Skyline over Garden City homes and beyond. Complete with individual cooling & heating throughout, security intercom, engineered timber flooring, abundance of natural light, stylish interior and secure car space.