

6/535 Military Road, Largs North, SA 5016



Sold Unit

Friday, 15 September 2023

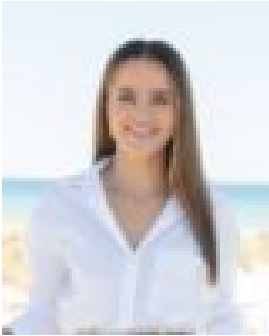
6/535 Military Road, Largs North, SA 5016

Bedrooms: 2

Bathrooms: 2

Parkings: 1

Type: Unit



Teagan Earl

0429819922

\$353,500

Positioned on the second floor, this 2-bedroom unit is nestled within a quaint complex and offers all there is to love about easy-care living within walking distance to the sandy Largs foreshore. Solid brick construction ensures both durability and a peaceful ambience, whilst the renovated interiors offer a relaxed and convenient lifestyle. The unit is adorned with floating floorboards and neutral tones, creating an inviting atmosphere upon entry with open-plan living and all rooms of generous proportions. The living space invites a comfortable and versatile environment for relaxation and gatherings. Whether you're entertaining guests or enjoying a quiet evening at home, the interconnectedness of the living and kitchen area sets the stage for a harmonious living experience. Both bedrooms offer ample space and convenience with built-in robes and ceiling fans. The master bedroom grants direct access to the north-facing balcony, perfect for enjoying a morning coffee or embracing the evening sun. The centralised bathroom has been carefully considered to maximize utility and practicality while maintaining a clean and uncluttered appearance. The clever integration of the laundry area showcases the art of efficient living, where convenience meets sophistication. More to love: - Ducted R/C split system in main living area, ceiling fans in both bedrooms - Quaint & quiet group - Two generous-sized bedrooms with built-in robes, the master with a view over the balcony - 2 Pac kitchen with stainless steel appliances and gas cooktop - Undercover parking for one car - Security doors - Within walking distance to the beach, public transport, cafes on Military Road and Largs Pier Hotel Currently tenanted until Jan 2024 Strata Rates - Enquire with the agent. Largs North is a suburb in the Australian state of South Australia located on the Lefevre Peninsula in the west of Adelaide about 17 kilometres northwest of the Adelaide city centre. To place an offer on this property, please complete this Letter of Offer form <https://forms.gle/WehvGVwwpn7gUvjQ7> Disclaimer: Neither the Agent nor the Vendor accepts any liability for any error or omission in this advertisement. Any prospective purchaser should not rely solely on 3rd party information providers to confirm the details of this property or land and is advised to enquire directly with the agent in order to review the certificate of title and local government details provided with the completed Form 1 vendor statement.