

6/6 Mary Street, Glebe, NSW 2037



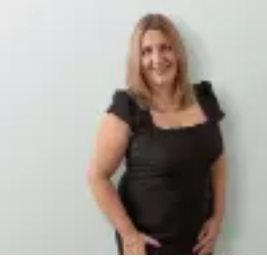
Studio For Rent

Saturday, 15 June 2024

6/6 Mary Street, Glebe, NSW 2037

Bathrooms: 1

Type: Studio



Sandra Harris
0280935222

\$495 per week

Located on Glebe Point enjoys captivating view across Rozelle Bay to the iconic Anzac Bridge. In a converted grand Victorian mansion on the foreshores off the bay, is this character-filled self-contained studio. The 2.2km foreshore walk/cycle-way is nearby as is the light rail station and bus stop.- Eat in kitchen with stainless steel appliances- Modern bathroom with shower- Wool carpet to living/sleeping area- Ground floor - Communal laundry with coin operated washing machine & dryer. - Large garden and lawn area for tenants' common use overlooks the bay. 6 month lease available. * A small dog may be considered upon application *To register for an INSPECTION, please submit your email enquiry via this advertisement and you will receive a LINK to register. Please NOTE if you do not register, we cannot ensure that you are notified and updated on any time changes, cancellations or further inspection times