

6/615 Old South Head Road, Rose Bay, NSW 2029

Sold Apartment

Thursday, 16 November 2023

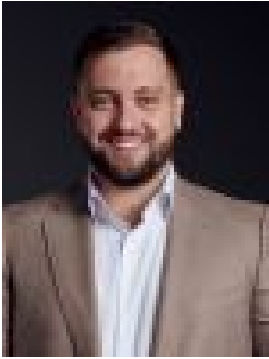
6/615 Old South Head Road, Rose Bay, NSW 2029

Bedrooms: 2

Bathrooms: 2

Parkings: 1

Type: Apartment



Christophe Serrao
0402939234



Ric Serrao
0412072178

Contact agent

Located for lifestyle in the heart of Rose Bay, this stylish brand new apartment enjoys a desirable private rear setting in a secure boutique complex. A well-conceived layout reveals sleek free flowing interiors enhanced by engineered timber floors complemented by premium brass and marble finishes. Designed by Edge Design consultants and NDRSN architects, the spacious open living/dining area is warmed in the winter months by an Escea gas fireplace, while sliding glass doors open to a full-width undercover balcony. The gourmet marble kitchen features a breakfast bar and integrated Miele gas appliances, while accommodation comprises two double sized bedrooms, both of which are appointed with custom built-in wardrobes and the master features a stylish marble ensuite. The full sized main bathroom features a standalone bathtub, while both the bathroom and the ensuite enjoy underfloor heating. Complete with lift access to a secure basement car space, it is positioned within a stroll of Rose Bay North village shops, Coles and popular eateries as well as Bake Bar, Harris Farm and moments to harbour beaches.- Boutique block of 6, No common walls- Open plan living/dining area w/ Escea fireplace- Sliding glass doors open to undercover balcony- Water/Gas outlets on balcony- Gourmet marble kitchen features a breakfast bar- Miele gas cooktop, integrated Miele dishwasher- Integrated fridge and freezer, vast storage- Wall mounted flat screen tv in living area- Well-sized bedrooms with custom built-in robes- Master with chic marble and mosaic tiled ensuite- Full sized main bathroom with standalone tub- Both bathroom and ensuite with underfloor heating and rain showers- Concealed fully equipped marble laundry with sink- Franke brass tapware in bath, kitchen, laundry- Wide engineered timber floors, high ceilings- Designer lighting, carpeted bedrooms, storage- Ducted a/c in apartment, foyer, video intercom- Level lift access to secure basement car space- Walk to Rose Bay North village, Coles, eateries- Moments to beaches, parks, buses at doorstep