

6/66b Jersey Avenue, Mortdale, NSW 2223



Apartment For Rent

Monday, 22 April 2024

6/66b Jersey Avenue, Mortdale, NSW 2223

Bedrooms: 2

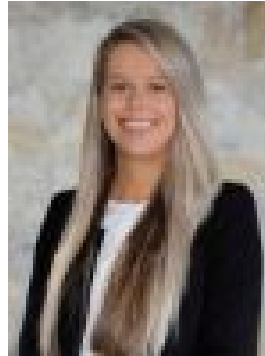
Bathrooms: 1

Parkings: 1

Type: Apartment



Ray White Georges River St George Oatley
(02)95807111



Gorana Petrovski
0295807111

\$600.00 per week

Situated in a quiet yet convenient location just moments to shops, cafes, Mortdale train station and schools, this full brick townhouse is ideal for those seeking modern, low maintenance living. With two large bedrooms privately located upstairs, and an open plan combined kitchen/living area downstairs, this townhouse offers the ideal layout and generous proportions.

- Two generous bedrooms, both with built-in robes
- Recently renovated kitchen opening onto large living area
- Spacious living/dining area with split system air conditioner
- Beautiful flooring throughout
- Kitchen with breakfast bar and quality cabinetry
- Internal laundry with easy access outdoors
- Single lock up garage with space for additional car
- Plenty of storage in the attic with ladder
- Boutique complex of only 8 townhouses
- Located close to both Mortdale and Penshurst shops and train stations