

6 Aspendale Place, Lyndhurst, Vic 3975



House For Rent

Wednesday, 3 January 2024

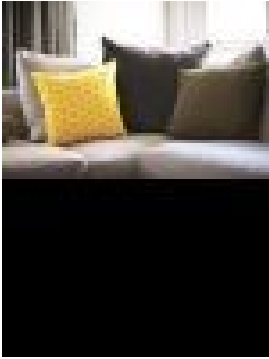
6 Aspendale Place, Lyndhurst, Vic 3975

Bedrooms: 4

Bathrooms: 2

Parkings: 2

Type: House



Ray White Pakenham Rental Team
0359408355

\$620 per week

** To apply for this property please register your enquiry by clicking on the red "get in touch" button or the apply button

**Nestled in the heart of Lyndhurst, you'll find this stunning 4-bedroom, 2-bathroom gem. Its contemporary design and prime location create the perfect haven for families in pursuit of their dream residence. As you step inside, you'll be greeted by a spacious and light-filled living area. The open plan layout seamlessly connects the living, dining, and kitchen areas, creating an inviting space for entertaining guests or spending quality time with family. The kitchen is equipped with a dishwasher, making meal preparation a breeze. Generously sized bedrooms with built-in robes, offering plenty of storage space for all your personal items. The master bedroom is a true retreat, featuring an ensuite bathroom and a spacious walk-in robe, adding a touch of luxury to your daily life. In addition, this home boasts a versatile rumpus room, serving as a blank canvas for your creative ideas, whether you wish to use it as a home office, a playroom for children, or an additional living area for entertaining guests. The possibilities are endless, and you have the freedom to customize the layout to perfectly suit your needs. This property also offers the luxury of two undercover pergola areas, providing you with delightful outdoor spaces to relax, dine, or entertain, regardless of the weather. Enjoy the best of indoor and outdoor living in this exceptional home. Other notable features of this property include ducted heating for year-round comfort, Solar systems, Tiled Garage, concrete backyard, a double garage with space for two cars. Located in the sought-after suburb of Lyndhurst, this property offers easy access to local amenities, schools, Walking distance to Lynbrook Station and parks.