

6 Breasley Crescent, Boorooma, NSW 2650



Sold House

Sunday, 13 August 2023

6 Breasley Crescent, Boorooma, NSW 2650

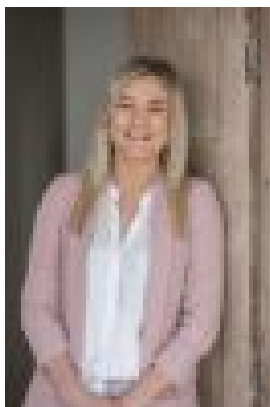
Bedrooms: 4

Bathrooms: 2

Parkings: 2

Area: 733 m2

Type: House



Taylor Maurer

\$719,000

Welcome to 6 Breasley Crescent, a contemporary family home, presented and maintained to perfection. Nestled on a quiet cul-de-sac in the highly sought after suburb, Boorooma, this immaculate home offers the perfect blend of modern living, convenience, and comfort. You will be immediately impressed by the spacious and light-filled formal and informal living areas. A stunning kitchen, recently renovated boasts ample storage, a dishwasher, and a gas cooktop, making it the ideal space for the home chef to whip up culinary delights. The master bedroom features a walk-in robe and a tidy ensuite, equipped with a split system and ceiling fan, while the other bedrooms come with ceiling fan's & built-in robes. All serviced by a neat tidy bathroom and a separate toilet. Keep comfortable all year round with other alternative heating & cooling options, including ducted evap A/C and ducted gas heating. Outside, the well-manicured, established yards will be an absolute hit with something on offer for everyone. Entertain friends and family all year round under the undercover alfresco area, or gather around the built-in fire pit for those cooler evenings. With side access providing space for a caravan or boat with a 15A power source, a double remote control garage with drive-through access point, and a garden shed, there is ample storage and parking for everyone. Located close to schools, shops, and the university, this stunning property is perfect for families, downsizers, and everyone in between. Don't miss the opportunity to make 6 Breasley Crescent your new home – enquire today and start living the dream! Disclaimer: *All information contained herein is gathered from sources we believe to be reliable, however, we cannot guarantee its accuracy and interested persons should rely on their own enquiries.