

**6 Cliffdale Avenue, Deception Bay, Qld 4508**



**Sold House**

Monday, 14 August 2023

6 Cliffdale Avenue, Deception Bay, Qld 4508

**Bedrooms: 4**

**Bathrooms: 2**

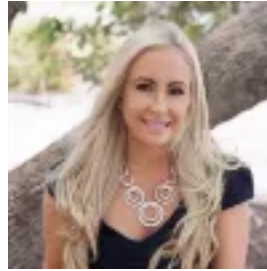
**Parkings: 2**

**Area: 668 m2**

**Type: House**



Lydia Robins  
0732040911



Clare Robins  
0732040911

## Contact agent

300M TO THE WATERFRONT - LOCATED THE POPULAR POCKET!! Nestled in a peaceful locale, 6 Clifffdale Avenue presents an extraordinary opportunity to embrace a lifestyle of comfort and versatility. Offering four bedrooms and two bathrooms over two spacious levels this move in ready abode is perfect for families desiring space or investors seeking optimal rental returns. With its thoughtful layout, multiple living areas, and proximity to the waterfront, this is so much more than a house. A bayside haven, with established gardens, polished timber flooring and seamless harmony between the internal and external living spaces, this home promises an exceptional living experience harnessing convenience and relaxation. Anchored on a generous 670m<sup>2</sup> block, this opportunity invites you to savour moments in the dedicated outdoor entertaining spaces and for those who want to capitalise on the incredible location to create your dream home, this property offers a canvas for creating memories. Property Highlights: - Four spacious bedrooms, with built in robes - Three bedrooms upstairs, with large bedroom and ensuite downstairs - perfect for parents, guests, or a teenage retreat - Sunkissed living and dining upstairs, that leads to covered deck - Massive rumpus room downstairs - Main bathroom upstairs with bath and shower, separate w/c - Well appointed kitchen with breakfast bar, opening out to the deck and dining room, ideal for entertaining - Large laundry that opens out to the covered patio area downstairs - Fully fenced backyard with side access - Carport and single lock up garage - Insulated for yearlong comfort - Large backyard with room to move - Ceiling fans throughout and air conditioning in main living zones - Security screens for added peace of mind Situated a mere 300 meters from the waterfront, you can indulge in leisurely strolls along the shore and embrace the serene ambiance of coastal living. Located conveniently to major roads, the M1 motorway, and transport hubs, this residence grants effortless access to Brisbane and the Sunshine Coast. With a choice of private and public schools close by and major shopping centres just moments away, everything you need is mere moments away. - 3 min to Deception Bay North State School - 4 min to Deception Bay Market Place - 5 min to Deception Bay High School - 8 min to M1 on ramp, Deception Bay - 15 min to Westfield North Lakes - 16 min to Redcliffe Esplanade - 30 min to Brisbane Airport - 40 min to Brisbane Take a step towards securing your slice of paradise, contact Lydia & Clare Robins now to unlock the door to premium bayside living today. Disclaimer: This information is provided for general information purposes only and is based on information provided by the Seller and may be subject to change. No warranty of representation is made as to its accuracy and interested parties should place no reliance on it and should make their own independent enquiries.