

# 6 Cosgrove Court, Meadow Heights, Vic 3048



## House For Sale

Friday, 19 April 2024

6 Cosgrove Court, Meadow Heights, Vic 3048

Bedrooms: 4

Bathrooms: 2

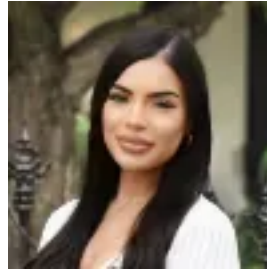
Parkings: 3

Area: 616 m<sup>2</sup>

Type: House



Arjun Chandaka  
0393002211



Stephane Bootlis  
0406806431

**\$500,000 - \$550,000**

Positioned close to reserves and parklands sits this wonderful family opportunity to enjoy space, comfort and a great sized piece of land. Already partially renovated and ready to personalise, it features 4 good sized rooms with sun filled windows and the master with its own ensuite, updated kitchen with eat in area, lounge room for entertaining and retreat area for kicking back or tantamounts of toys, study for a great home office, and finishing at a sizeable undercover alfresco area attached to the lockable carport to enjoy outdoor events in your secure and private yard. Only minutes from amenities, shopping and Coolaroo Station plus much more, make your first investment in a long term home for your loved ones or perfect for your successful portfolio. Highlights- Approximately 616sqm property- Ducted heating and evaporative cooling throughout- Expansive formal lounge room with unique tiles and big windows for natural light- Modern kitchen featuring gas cooking, s/s wall oven and grill, good storage and optional eat in area- Master bedroom with WIR and own ensuite 3 x additional carpeted bedrooms, 1 with BIR- Extra room for a study or toy room- Retreat space for multi uses to suit your family- Big internal laundry leading to the side undercover area- Large and secure rear yard with wonderful undercover alfresco space + shed- Roller door lockable car port for car parking or extension of alfresco- Short drive to Coolaroo Station and public transport, medical centres, local retail shops and an array of eateries 5min drive to Roxburgh Park or Broadmeadows Central & 20mins to Highpoint Shopping Centre- Within catchment zone for Bethal Primary School and Hume Central Secondary College, and several other public and private schools- Direct access approx. 30mins to Melbourne CBD via M2 and 12mins to Tullamarine Airport All information about this property has been provided to Ray White by third parties. Ray White has not verified the information and does not warrant its accuracy or completeness. Parties should make and rely on their own enquiries in relation to this property.