

6 Elva Avenue, Killara, NSW 2071

STONE

Sold House

Friday, 19 January 2024

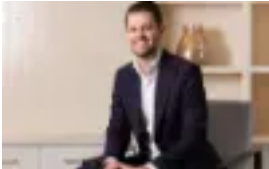
6 Elva Avenue, Killara, NSW 2071

Bedrooms: 4

Bathrooms: 2

Parkings: 2

Type: House



Matt Payne
0290953500



Ryan Woo
0290953500

Contact agent

This rare and sophisticated home offers the best of the North Shore, pairing a leafy north to rear setting with walk to rail convenience. Enjoy blissful privacy on 853sqm approx. of land, with handy rear access to Forsyth Street. Two substantial living and dining areas are enhanced by a custom granite kitchen and seamless connection to the outdoors for poolside entertaining wrapped in richly landscaped gardens. The main bedroom is a masterpiece of luxury perfect for revitalising after a long day. Walk to Killara or Gordon rail. In Killara High School zone. Dress circle address enriched with immersive private gardens- 853sqm approx. land, north to rear through to Forsyth Street- Richly carpeted lounge, marble gas fireplace, formal dining or TV room- Open family room + casual dining flows to alfresco entertaining and garden- Granite and Miele kitchen, induction cooktop, grill, fryer, oven, dishwasher- Four bedrooms, two sharing a charming sunroom, built-in robes- Luxury master: study, sitting area, balcony, walk-in robe, marble ensuite- Beautifully appointed bathrooms, marble finishes, bath, double vanity- Landscaped alfresco entertaining areas sun-kissed from north orientation- Swimming pool in tranquil privacy features a refreshing deep end- Double garage, vast storage or wine cellar, workshop, solar panels, air con- Walk to rail, Gordon East Public + Killara High School zones, near Ravenswood