

6 Franklin Close, Clifton Beach, Qld 4879

House For Sale

Thursday, 13 June 2024



6 Franklin Close, Clifton Beach, Qld 4879

Bedrooms: 4

Bathrooms: 2

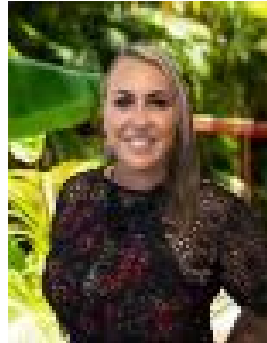
Parkings: 4

Area: 645 m2

Type: House



Matthew Pearce
0418708758



Nicole Barry
0418763311

Offers in the \$800,000s

Situated on the border of Palm Cove, this spacious 4-bedroom, 2-bathroom home is the epitome of family living. With its side access for boats and caravans, great pool area, and a generous backyard, this property offers the ultimate in comfort and convenience. Enjoy the tranquility of the quiet location while still being within walking distance to Palm Cove beach, Clifton Beach and the Silver Crescent Dog Park. Whether you're relaxing by the pool, entertaining friends and family, or simply enjoying the serenity of the surroundings, this home has it all. Featuring a modern design and ample natural light, this residential house is ideal for those seeking a comfortable and stylish lifestyle. The open-plan living and dining area seamlessly flow into the well-equipped kitchen, creating a perfect space for entertaining. The property also boasts two garages and two open spaces, providing plenty of room for vehicles and additional storage. With its prime location and fantastic features, this property won't last long. Don't miss out on the opportunity to make this house your dream home. Contact us today to arrange a private viewing.