

# 6 Galloway Place, Tamworth, NSW 2340

## Sold House

Friday, 15 March 2024

6 Galloway Place, Tamworth, NSW 2340

Bedrooms: 4

Bathrooms: 2

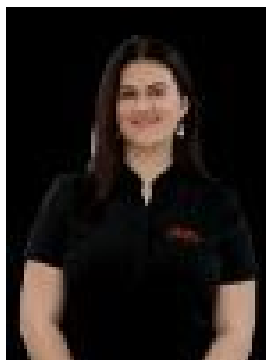
Parkings: 2

Area: 704 m2

Type: House



Mark Sleiman  
0267637000



Amy Nawer  
0407011038

**\$665,000**

Tucked away in the peaceful Redbank Estate, located in Calala, 6 Galloway Place is a stunning home that provides a perfect balance of room, comfort, and accessibility. The house has an amazing number of features, such as a formal dining room and lounge that allow for great comfort. Situated at the center of the house, the functional kitchen has an overview of the comfortable dining and sitting area, guaranteeing that family time is spent together and treasured. The master suite, secluded at the front, offers a private retreat with an ensuite and walk-in robe. The other bedrooms are generously sized all with built-in wardrobes. The house offers a spacious, well-appointed second bathroom offering a shower, bath & toilet for convenience to everyone. Stepping outside, the covered alfresco area is perfect for entertaining guests and family surrounded by a backyard full of potential. Located in the popular and ever growing Calala, this residential property is only a minutes' drive away from the Tamworth CBD, Aelec, TRECC and Sports Dome. Don't miss your chance to make this house your home - contact PRD Tamworth today to arrange a viewing!